



Client \_\_\_\_\_ Quantity \_\_\_\_\_  
 Project \_\_\_\_\_ Position \_\_\_\_\_

## ROC 900

Model: R90/120BRE/120X/S

Cod: MP01614124007

### Technical data

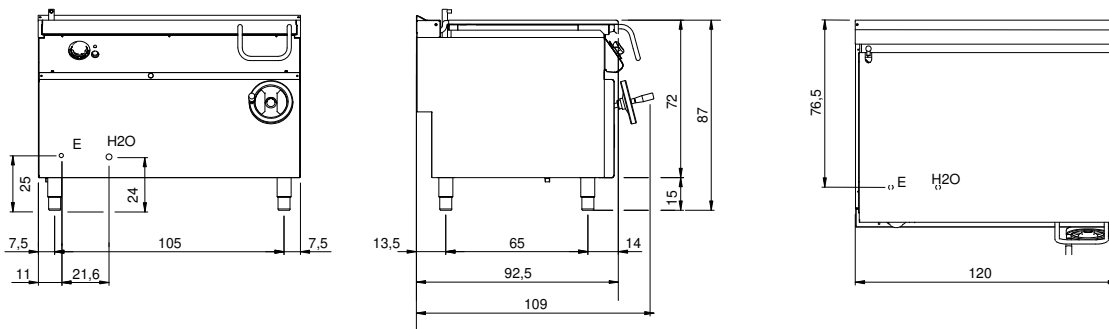
Modularity:	On closed cabinet
Dimensions (mm):	1200x900x870
Total electric power (kW):	19
Cooking zone dimensions 1 (LxD mm):	fondo vasca 1080x567
Nr. Wells:	1
Well litres 1:	120
Well dimensions 1 (mm):	1080x567x170
Electric power (V):	380-415
Ampere (A):	30
Phases:	3N
Cable section (mmq):	5G6
Frequency (Hz):	50-60
Cold water inflow:	3/4"
Cold water pressure (bar):	Max pressure 5 bar
Net volume (m3):	0,94
Packing dimensions (mm):	1280x1026x1109
Gross weight (kg):	249
Gross volume (m3):	1,456

### Features

Working top:	Made of AISI 304 stainless steel with a thickness of 20/10 mm
Material of plate:	Inox
Plate finish:	Smooth
Tipologia ribaltamento:	Manual input
Knobs:	Made of aluminum with IPX5 water protection
Water inflow:	With solenoid valve

Electric tilting brattpan capacity 120 lt. Side panels, bottom and back made of stainless steel. Designed for flush alignment. Cooking well walls and bottom made of Stainless steel AISI 304. Manual well tilting on front axle by means of gear worm controlled by handwheel. Well water charge by means of filling tap located on the flue. Well lid made of stainless steel AISI 304 with ergonomic and athermic handle. Heating by means of electric elements made of Incoloy 800 alloy. temperature control by thermostat. Safety thermostat stop heating in case of malfunction. Special design knobs to avoid water penetration in the control panel. Adjustable feet made of stainless steel. IPX5 protection rating. Electric power supply VAC 400 3N 50÷60 Hz - 19 kW.

**Technical draw**



E: Electric power

H2O: Water inflow 3/4"