



Client _____ Quantity _____
 Project _____ Position _____

ROC 900

Model: R90/120BRE/120F/S
 Market: Extra UE

Cod: MP01614124005

Technical data

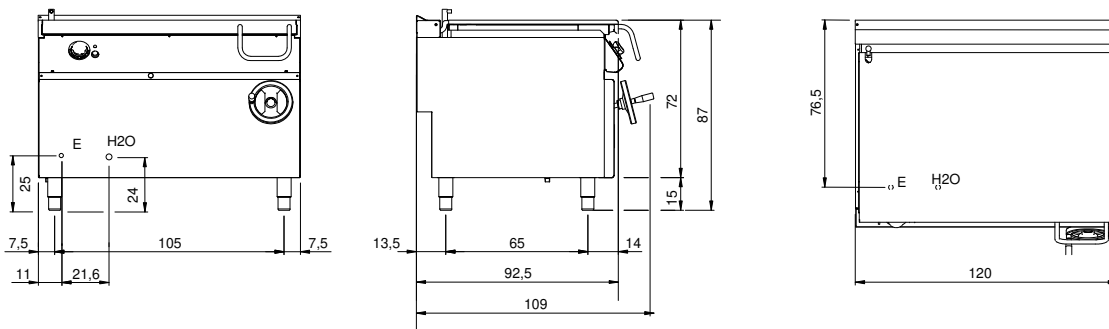
| | |
|-------------------------------------|----------------------|
| Modularity: | On closed cabinet |
| Dimensions (mm): | 1200x900x870 |
| Total electric power (kW): | 19 |
| Cooking zone dimensions 1 (LxD mm): | fondo vasca 1080x567 |
| Nr. Wells: | 1 |
| Well litres 1: | 120 |
| Well dimensions 1 (mm): | 1080x567x170 |
| Electric power (V): | 380-415 |
| Ampere (A): | 30 |
| Phases: | 3N |
| Cable section (mmq): | 5G6 |
| Frequency (Hz): | 50-60 |
| Cold water inflow: | 3/4" |
| Cold water pressure (bar): | Max pressure 5 bar |
| Net volume (m3): | 0,94 |
| Packing dimensions (mm): | 1280x1026x1109 |
| Gross weight (kg): | 249 |
| Gross volume (m3): | 1,456 |

Features

| | |
|-------------------------|---|
| Working top: | Made of AISI 304 stainless steel with a thickness of 20/10 mm |
| Material of plate: | Iron |
| Plate finish: | Smooth |
| Tipologia ribaltamento: | Manual input |
| Knobs: | Made of aluminum with IPX5 water protection |
| Water inflow: | With solenoid valve |

Electric tilting brattpan capacity 120 lt. Side panels, bottom and back made of stainless steel. Top designed for flush alignment. Cooking well made of Stainless steel AISI 304 with bottom in mild steel. Manual well tilting on front axle by means of gear worm controlled by handwheel. Well water charge by means of filling tap located on the flue. Well lid made of stainless steel AISI 304 with ergonomic and athermic handle. Heating by means of electric elements made of Incoloy 800 alloy. Temperature control by thermostat. Safety thermostat stop heating in case of malfunction. Special design knobs to avoid water penetration in the control panel. Adjustable feet made of stainless steel. IPX5 protection rating. Electric power supply VAC 400 3N 50÷60 Hz - 19 kW.

Technical draw



E: Electric power

H2O: Water inflow 3/4"