



Client _____ Quantity _____

Project _____ Position _____

ROC 1100

Model: R110/80BMFE/P

Cod: MP01575125004

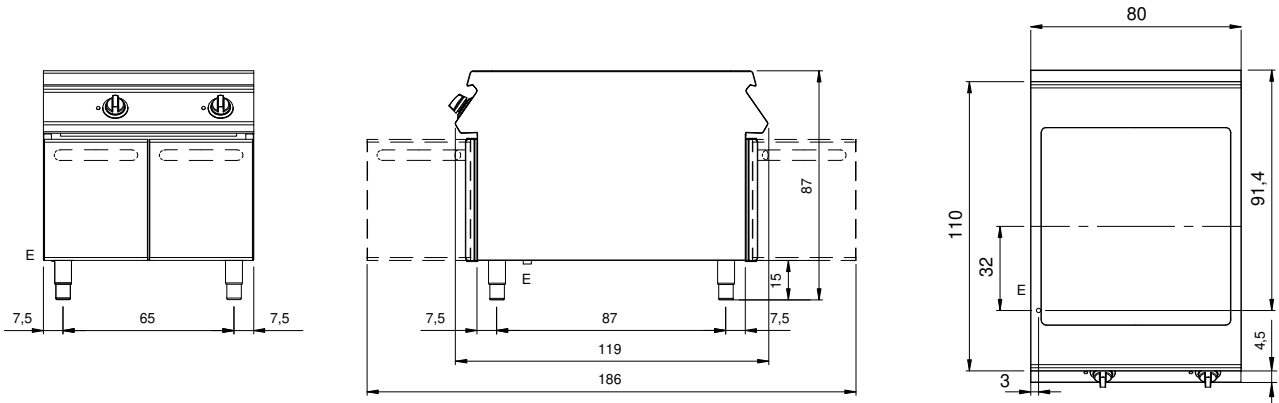
Technical data

Modularity:	On cabinet with doors
Dimension (mm):	800x1100x870
Total electric power (kW):	13,2
Cooking zone dimensions 1 (LxD mm):	720x750
Nr. Wells:	1
Well litres 1:	40,5
Well dimensions 1 (mm):	720x750x98
Electric power (V):	380-415
Ampere (A):	20,5
Phases:	3N
Cable section (mmq):	5G2,5
Frequency (Hz):	50-60
Net volume (m3):	0,766
Packing dimensions (mm):	880x1272x1274
Gross volume (m3):	1,426

Features

Working top:	Made of AISI 304 stainless steel with a thickness of 2 mm
Material of plate:	Chrome
Plate finish:	Smooth
Tipologia ribaltamento:	Manual input
Knobs:	Made of aluminum with IPX5 water protection
Handles:	The brushed aluminum handles allow for a secure and sturdy grip with a ergonomic lines
Heating:	Armored heating elements positioned under the well

Technical draw



E: Electric power