



Client _____ Quantity _____

Project _____ Position _____

ROC 700

Model: R70/40GRLI/A

Cod: MP01454113012

Technical data

Modularity: On open cabinet

Dimension (mm): 400x730x870

Packing dimensions (mm): 480x856x1075

Gross weight (kg): 64

Gross volume (m3): 0,442

Features

Grill: In stainless steel

Working top: Made of AISI 304 stainless steel with a thickness of 20/10 mm

Knobs: Made of aluminum with IPX5 water protection

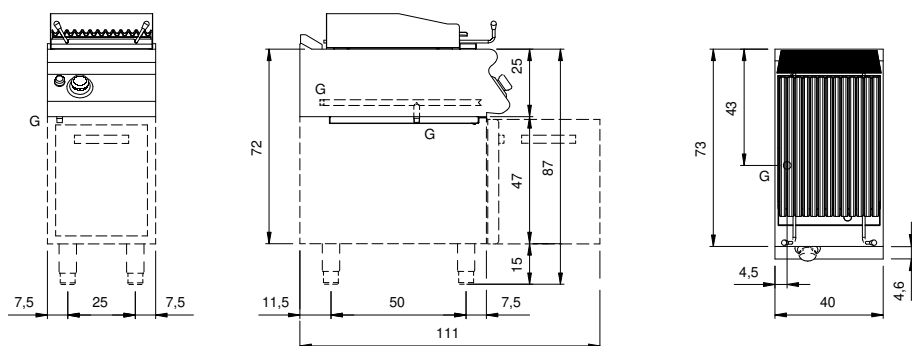
Liquid collection container: Removable and dishwasher safe

Upright Splash guard: On three sides

Kit Gas: Natural gas conversion kit 30/50 m/bar (tested with natural gas G20)

Gas lava stone grill, model on open cabinet. Side panels, bottom and back made in stainless steel. Top made in AISI 304 thickness 20/10. designed for flush alignment. Lava stone support made in Cast Iron. V shaped hob grill made in stainless steel. Lever-controlled grill raising mechanism to control distance of grill from brazier with one hand. Grease collection by an upper front extractable tray and by an extractable drawer located under the heating zone. Rear and side splashguard. Heating by means of steel burner with stabilized flame complete with pilot flame and safety thermocouple. Cooking temperature manually controlled by gas supply safety tap. Automatic ignition by means of piezoelectric device with waterproof cap. Special design knobs to avoid water penetration in the control panel. Base completely made in stainless steel. Pressed hinged doors. Ergonomic handles. Adjustable feet made in stainless steel. IPX5 protection rating. Gas total power 7.5 kW.

Technical draw



G: Gas connection 1/2"