

Client \_\_\_\_\_ Quantity \_\_\_\_\_  
Project \_\_\_\_\_ Position \_\_\_\_\_

## FUN 650

Model: F65/70GRLI/T

Cod: MP01452112003



### Technical data

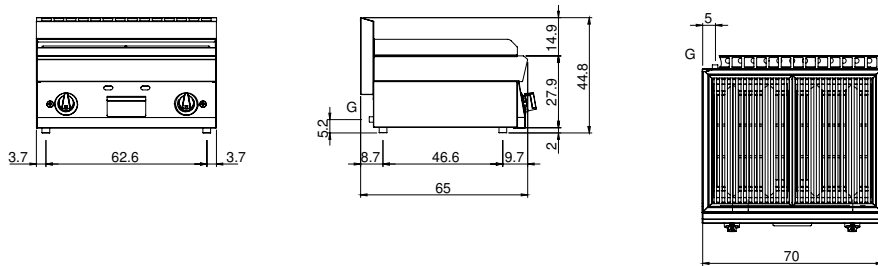
Modularity:	Top
Dimension (mm):	700x650x300
Total gas power (Kcal/h):	9459
Total gas power (kW):	11
Cooking zone dimensions 1 (LxD mm):	n°2 681.011.00 (160x mm):
Cooking zone dimensions 2 (LxD mm):	n°2 681.011.00 (160x mm):
Net volume (m3):	0,137
Packing dimensions (mm):	776x776x636
Gross weight (kg):	59
Gross volume (m3):	0,383

### Features

Grill:	In stainless steel
Working top:	Made of AISI 304 stainless steel with a thickness of 10/10 mm
Knobs:	Knobs are made from a sturdy heat-resistant polymer blend and are equipped with liquid anti-leakage washer
Liquid collection container:	Removable and dishwasher safe
Upright Splash guard:	On two sides
Kit Gas:	Natural gas conversion kit 30/50 m/bar (tested with natural gas G20)

Gas lava stone grill Top made of AISI 304 stainless steel thickness 8/10; covering in AISI 430 stainless steel thickness 8/10; bottoms and internal parts in AISI 430 steel; internal reinforcements made of anti-corrosion material (aluminised sheet metal). Hob grill in stainless steel, equipped with two independent cooking zones. Stainless steel pull-out drawer for collection of residual fats. - 2 burners x 5.5 kW., in stainless steel with pilot burners and piezoelectric ignition. Gas supplied by means of safety valve with thermocouple. Total power 11 kW.

## Technical draw



G: Gas connection 1/2"