

Client \_\_\_\_\_ Quantity \_\_\_\_\_  
 Project \_\_\_\_\_ Position \_\_\_\_\_

## FUN 700

Model: F70/40GRGI/T

Cod: MP01412113006



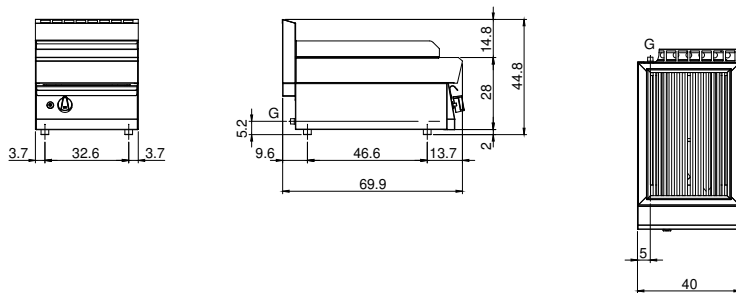
### Technical data

|                                     |             |
|-------------------------------------|-------------|
| Modularity:                         | Top         |
| Dimensions (mm):                    | 400x700x300 |
| Total gas power (Kcal/h):           | 6449        |
| Total gas power (kW):               | 7,5         |
| Cooking zone dimensions 1 (LxD mm): | 500x320     |
| Gas connection:                     | 1/2"        |
| Net volume (m3):                    | 0,084       |
| Packing dimensions (mm):            | 477x776x612 |
| Gross weight (kg):                  | 41          |
| Gross volume (m3):                  | 0,227       |

### Features

|                              |  |
|------------------------------|--|
| Grill:                       | In stainless steel   |
| Working top:                 | Made of AISI 304 stainless steel with a thickness of 10/10 mm  |
| Knobs:                       | Knobs are made from a sturdy heat-resistant polymer blend and are equipped with liquid anti-leakage washer |
| Liquid collection container: | Removable and dishwasher safe  |
| Upright Splash guard:        | On two sides   |
| Kit Gas:                     | Natural gas conversion kit 30/50 m/bar (tested with natural gas G20)                                       |

Gas grill Top. Made in AISI 304 stainless steel thickness 8/10; covering in AISI 430 stainless steel 8/10; bottoms and internal parts in AISI 430 steel; internal reinforcements made of anti-corrosion material. (aluminised sheet metal). Grill with stainless steel hob. Stainless steel burner (1x7.5 kW). Gas supplied by means of safety valve cocks with thermocouple and pilot burner for automatic burner lighting. Piezoelectric ignition of burner. Stainless steel grease collection tray. Total power 7.5 kW

**Technical draw**

G: Gas connection 1/2"