

Client _____ Quantity _____

Project _____ Position _____

FUN 650

Model: F65/70GRGG/T

Cod: MP01412112001

Market: Extra UE



Technical data

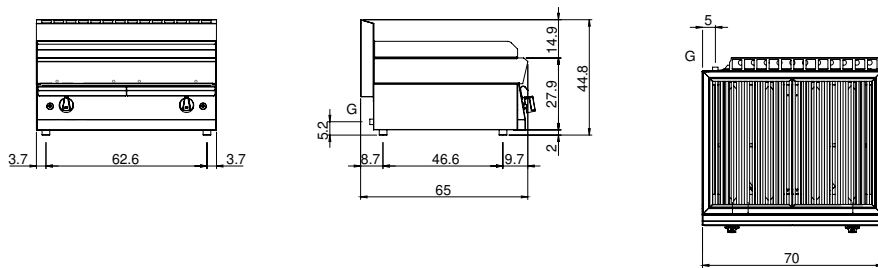
Modularity:	Top
Dimension (mm):	700x650x300
Total gas power (Kcal/h):	12898
Total gas power (kW):	15
Cooking zone dimensions 1 (LxD mm):	500x320
Cooking zone dimensions 2 (LxD mm):	500x320
Gas connection:	1/2"
Net volume (m3):	0,137
Packing dimensions (mm):	776x776x636
Gross weight (kg):	59
Gross volume (m3):	0,383

Features

Grill:	In cast iron
Working top:	Made of AISI 304 stainless steel with a thickness of 10/10 mm
Knobs:	Knobs are made from a sturdy heat-resistant polymer blend and are equipped with liquid anti-leakage washer
Upright Splash guard:	On two sides
Kit Gas:	Natural gas conversion kit 30/50 m/bar (tested with natural gas G20)

Gas grill Top. Made of AISI 304 stainless steel thickness 8/10; covering in AISI 430 stainless steel thickness 8/10; bottoms and internal parts in AISI 430 steel; internal reinforcements made of anti-corrosion material (aluminised sheet metal). Grill with hob in cast iron, equipped with two independent cooking zones. Stainless steel burners (2x7.5 kW). Safety valve cocks with thermocouple and pilot burner for automatic burner lighting. Piezoelectric burner ignition Stainless steel drip tray. Total power 15 kW.

Technical draw



G: Gas connection 1/2"