

Client _____ Quantity _____
Project _____ Position _____

FUN 650

Model: F65/40GRGG/T
Market: Extra UE

Cod: MP01412112000



Technical data

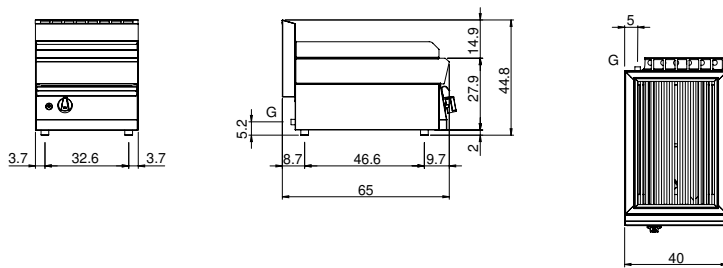
Modularity:	Top
Dimension (mm):	400x650x300
Total gas power (Kcal/h):	6449
Total gas power (kW):	7,5
Cooking zone dimensions 1 (LxD mm):	500x320
Gas connection:	1/2"
Net volume (m3):	0,078
Packing dimensions (mm):	477x776x612
Gross weight (kg):	34
Gross volume (m3):	0,227

Features

Grill:	In cast iron
Working top:	Made of AISI 304 stainless steel with a thickness of 10/10 mm
Knobs:	Knobs are made from a sturdy heat-resistant polymer blend and are equipped with liquid anti-leakage washer
Upright Splash guard:	On two sides
Kit Gas:	Natural gas conversion kit 30/50 m/bar (tested with natural gas G20)

Gas grill Top. Made in AISI 304 stainless steel thickness 8/10; covering in AISI 430 stainless steel 8/10; bottoms and internal parts in AISI 430 steel; internal reinforcements made of anti-corrosion material. (aluminised sheet metal). Grill with cast iron hob. Stainless steel burner (1x7.5 kW). Gas supplied by means of safety valve cocks with thermocouple and pilot burner for automatic burner lighting. Piezoelectric ignition of burner. Stainless steel grease collection tray. Total power 7.5 kW

Technical draw



G: Gas connection 1/2"