

Client _____ Quantity _____
Project _____ Position _____

ROC 900

Model: R90/80FTE/CLR/T

Cod: MP01374124022



Technical data

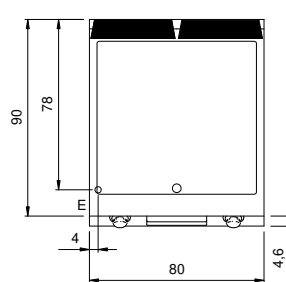
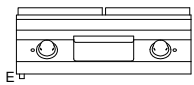
Modularity:	Top
Dimension (mm):	800x900x280
Total electric power (kW):	15
Cooking zone dimensions 1 (LxD mm):	735x700
Electric power (V):	380-415
Ampere (A):	23
Phases:	3N
Cable section (mmq):	5G4
Frequency (Hz):	50-60
Net volume (m3):	0,202
Packing dimensions (mm):	880x1026x509
Gross weight (kg):	107,4
Gross volume (m3):	0,460

Features

Working top:	Made of AISI 304 stainless steel with a thickness of 20/10 mm
Material of plate:	Polished chrome
Knobs:	Made of aluminum with IPX5 water protection
Flue:	Removable made of cast iron
Liquid collection container:	Removable and dishwasher safe
Plate:	Polished chromed plate
Upright Splash guard:	On two sides (optional)

Electric griddle with 2/3 Smooth 1/3 grooved chromed plate, counter top model. Side panels, bottom and back made in stainless steel. Top made in AISI 304 thickness 20/10. Rear flue made in enamelled cast-iron. Designed for flush alignment. Recessed (4 cm) hotplate fully welded and sealed to the top. Hard chrome plated hotplate with mirror polished surface with cold zone at the front. Round hole and extractable drawer for grease drain and collection. Plate dim.735x700 mm. Two independent cooking zones. Heating by means of "Incoloy 800" armored heating elements. Temperature control by means of thermostat. Safety thermostat. Lamp on control panel to indicate heating activation. Special design knobs to avoid water penetration in the control panel. Adjustable feet. IPX5 protection rating. Electric power supply VAC 400 3N 50÷60 Hz - 15 kW.

Technical draw



E: Electric power