



Client _____ Quantity _____
Project _____ Position _____

ROC 900

Model: R90/80FTG/L/P
Market: Extra UE

Cod: MP01374114015

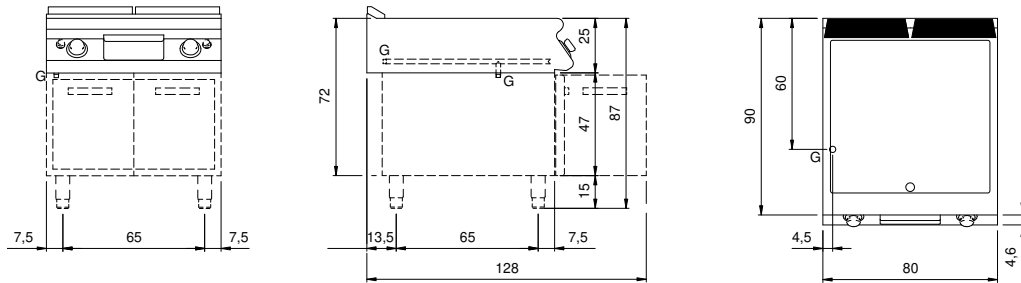
Technical data

| | |
|-------------------------------------|-----------------------|
| Modularity: | On cabinet with doors |
| Dimension (mm): | 800x900x870 |
| Total gas power (Kcal/h): | 12038 |
| Total gas power (kW): | 14 |
| Cooking zone dimensions 1 (LxD mm): | 735x700 |
| Gas connection: | 1/2" |
| Net volume (m3): | 0,626 |
| Packing dimensions (mm): | 880x1026x1109 |
| Gross weight (kg): | 116 |
| Gross volume (m3): | 1,001 |

Features

| | |
|------------------------------|--|
| Working top: | Made of AISI 304 stainless steel with a thickness of 20/10 mm |
| Material of plate: | Mild steel |
| Plate finish: | Smooth |
| Knobs: | Made of aluminum with IPX5 water protection |
| Handles: | The brushed aluminum handles allow for a secure and sturdy grip with a ergonomic lines |
| Flue: | Removable made of cast iron |
| Liquid collection container: | Estraibile e lavabile in lavastoviglie |
| Plate: | In mild steel |
| Upright Splash guard: | On two sides (optional) |
| Kit Gas: | Natural gas conversion kit 30/50 m/bar (tested with natural gas G20) |

Technical draw



G: Gas connection 1/2"