



Client _____ Quantity _____
Project _____ Position _____

ROC 700

Model: R70/80FTG/L/A
Market: Extra UE

Cod: MP01374113014

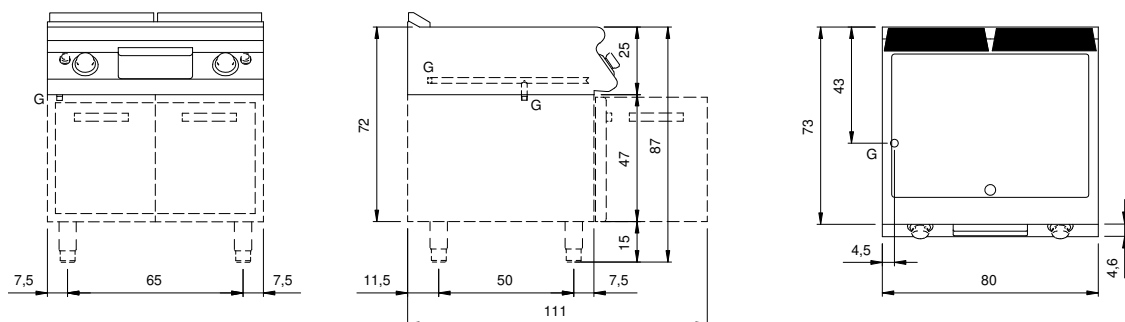
Technical data

Modularity:	On open cabinet
Dimension (mm):	800x730x870
Total gas power (Kcal/h):	10319
Total gas power (kW):	12
Cooking zone dimensions 1 (LxD mm):	735x530
Gas connection:	1/2"
Net volume (m3):	0,508
Packing dimensions (mm):	880x856x1109
Gross weight (kg):	107
Gross volume (m3):	0,835

Features

Working top:	Made of AISI 304 stainless steel with a thickness of 20/10 mm
Material of plate:	Mild steel
Plate finish:	Smooth
Knobs:	Made of aluminum with IPX5 water protection
Flue:	Removable gas exhaust flue grill made of cast iron
Liquid collection container:	Estraibile e lavabile in lavastoviglie
Plate:	In mild steel
Upright Splash guard:	On two sides (optional)
Kit Gas:	Natural gas conversion kit 30/50 m/bar (tested with natural gas G20)

Technical draw



G: Gas connection 1/2"