

Client \_\_\_\_\_ Quantity \_\_\_\_\_  
Project \_\_\_\_\_ Position \_\_\_\_\_

## FUN 650

Model: F65/100FTE/CL/T

Cod: MP01372122009



### Technical data

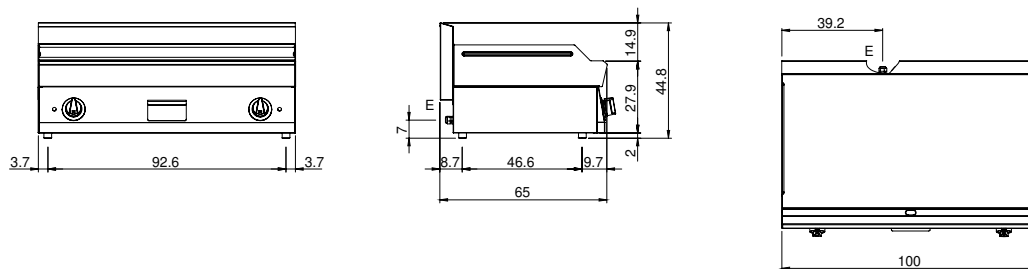
Modularity:	Top
Dimension (mm):	1000x650x300
Total electric power (kW):	12
Cooking zone dimensions 1 (LxD mm):	996x520
Electric power (V):	380-415
Ampere (A):	20,5
Phases:	3N
Cable section (mmq):	5G2,5
Frequency (Hz):	50-60
Net volume (m3):	0,195
Packing dimensions (mm):	1076x763x636
Gross weight (kg):	104
Gross volume (m3):	0,522

### Features

Working top:	Made of AISI 304 stainless steel with a thickness of 10/10 mm
Material of plate:	Polished chrome
Plate finish:	Smooth
Knobs:	Knobs are made from a sturdy heat-resistant polymer blend and are equipped with liquid anti-leakage washer
Liquid collection container:	Removable and dishwasher safe
Plate:	Polished chromed plate
Upright Splash guard:	On two sides

Electric griddle with polished chromed grooved plate. Top in AISI 304 stainless steel thickness 8/10; covering in AISI 430 stainless steel 8/10; bottoms and internal parts in AISI 430 steel; internal reinforcements made of anti-corrosion material. (aluminised sheet metal). Equipped with two independent cooking zones. Cooking hotplate in chromed steel with high thermal conductivity for even temperature distribution. Provided with front groove, extractable drawer for grease collection and splash guard on three sides. 3 shielded heating elements of 1.5 kW/ea. for each cooking zone. Thermostat adjustable from 50° to 300° C. Total power 9 kW. Electrical power supply V AC 400+3N 50÷60 Hz.

## Technical draw



E: Electric power