

Client \_\_\_\_\_ Quantity \_\_\_\_\_  
Project \_\_\_\_\_ Position \_\_\_\_\_

## FUN 650

Model: F65/70FTE/L/T  
Market: Extra UE

Cod: MP01372122004



### Technical data

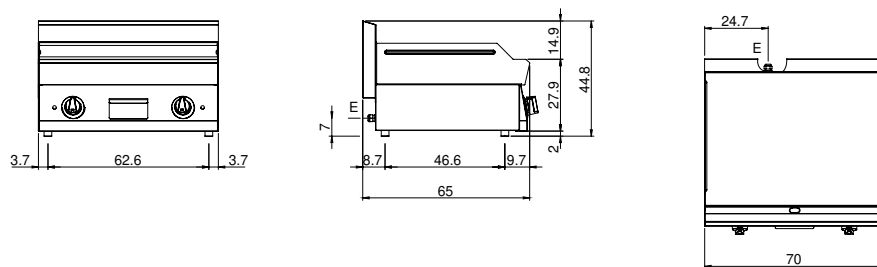
Modularity:	Top
Dimension (mm):	700x650x300
Total electric power (kW):	9
Cooking zone dimensions 1 (LxD mm):	696x520
Electric power (V):	380-415
Ampere (A):	14
Phases:	3N
Cable section (mmq):	5G2,5
Frequency (Hz):	50-60
Net volume (m3):	0,137
Packing dimensions (mm):	776x776x636
Gross weight (kg):	61
Gross volume (m3):	0,383

### Features

Working top:	Made of AISI 304 stainless steel with a thickness of 10/10 mm
Material of plate:	Mild steel
Plate finish:	Smooth
Knobs:	Knobs are made from a sturdy heat-resistant polymer blend and are equipped with liquid anti-leakage washer
Liquid collection container:	Removable and dishwasher safe
Plate:	In mild steel
Upright Splash guard:	On two sides

Electric griddle with smooth plate. Top in AISI 304 stainless steel thickness 8/10; covering in AISI 430 stainless steel 8/10; bottoms and internal parts in AISI 430 steel; internal reinforcements made of anti-corrosion material. (aluminised sheet metal). Equipped with two independent cooking zones. Provided with front groove, extractable drawer for grease collection and splash guard on three sides. 3 shielded heating elements of 1.5 kW/ea. for each cooking zone. Thermostat adjustable from 50° to 300° C. Total power 9 kW. Electrical power supply V AC 400+3N 50÷60 Hz.

## Technical draw



E: Electric power