

Client _____ Quantity _____
Project _____ Position _____

FUN 650

Model: F65/40FTE/R/T
Market: Extra UE

Cod: MP01372122002



Technical data

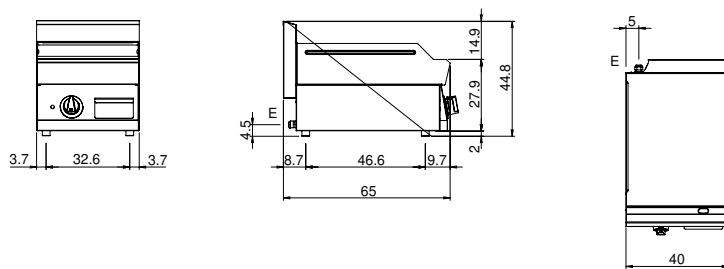
Modularity:	Top
Dimension (mm):	400x650x300
Total electric power (kW):	4,5
Cooking zone dimensions 1 (LxD mm):	396x520
Electric power (V):	380-415
Ampere (A):	7
Phases:	3N
Cable section (mmq):	5G1,5
Frequency (Hz):	50-60
Net volume (m3):	0,078
Packing dimensions (mm):	477x776x612
Gross weight (kg):	42
Gross volume (m3):	0,227

Features

Working top:	Made of AISI 304 stainless steel with a thickness of 10/10 mm
Material of plate:	Mild steel
Plate finish:	Ribbed
Knobs:	Knobs are made from a sturdy heat-resistant polymer blend and are equipped with liquid anti-leakage washer
Liquid collection container:	Removable and dishwasher safe
Plate:	In mild steel
Upright Splash guard:	On two sides

Electric griddle with grooved plate. Top in AISI 304 stainless steel thickness 8/10; covering in AISI 430 stainless steel 8/10; bottoms and internal parts in AISI 430 steel; internal reinforcements made of anti-corrosion material. (aluminised sheet metal). Cooking hotplate in steel with high thermal conductivity for even temperature distribution. Provided with front groove, extractable drawer for grease collection and splash guard on three sides. The cooking zone is provided with 3 shielded heating elements (1.5 kW ea.) which are controlled by a thermostat with a range of use from 50° to 300° C - Equipped with safety thermostat and indicator light to show proper operation - Plate dimensions 395x520 mm - Total power 4.5 kW. Electrical power supply V AC 400+3N 50÷60 Hz.

Technical draw



E: Electric power