

Client _____ Quantity _____
 Project _____ Position _____

FUN 700

Model: F70/70FTG/CL/T

Cod: MP01372113011



Technical data

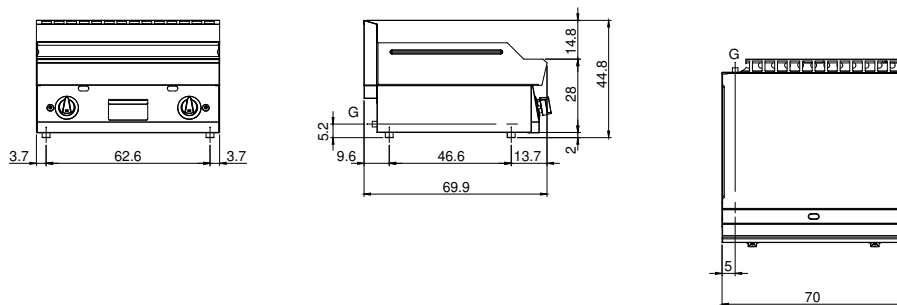
Modularity:	Top
Dimensions (mm):	700x700x300
Total gas power (Kcal/h):	9803
Total gas power (kW):	11,4
Cooking zone dimensions 1 (LxD mm):	696x520
Gas connection:	1/2"
Net volume (m3):	0,147
Packing dimensions (mm):	776x776x636
Gross weight (kg):	84
Gross volume (m3):	0,383

Features

Working top:	Made of AISI 304 stainless steel with a thickness of 10/10 mm
Material of plate:	Polished chrome
Plate finish:	Smooth
Knobs:	Knobs are made from a sturdy heat-resistant polymer blend and are equipped with liquid anti-leakage washer
Plate:	Polished chromed plate
Kit Gas:	Natural gas conversion kit 30/50 m/bar (tested with natural gas G20)

Electric griddle with satin chrome plate 2/3 Smooth 1/3 grooved Top in AISI 304 stainless steel thickness 10/10; covering in AISI 430 stainless steel 10/10; bottoms and internal parts in AISI 430 steel; internal reinforcements made of anti-corrosion material. (aluminised sheet metal). Equipped with two independent cooking zones. Cooking hotplate in satin chrome steel with high thermal conductivity for even temperature distribution. Provided with front groove, extractable drawer for grease collection and splash guard on three sides. 3 shielded heating elements of 1.5 kW/ea. for each cooking zone. Thermostat adjustable from 50° to 300° C. Total power 9 kW. Electrical power supply V AC 400+3N 50÷60 Hz.

Technical draw



G: Gas connection 1/2"