



Client _____ Quantity _____
Project _____ Position _____

FUN 700

Model: F70/70FTG/L/T
Market: Extra UE

Cod: MP01372113003

Technical data

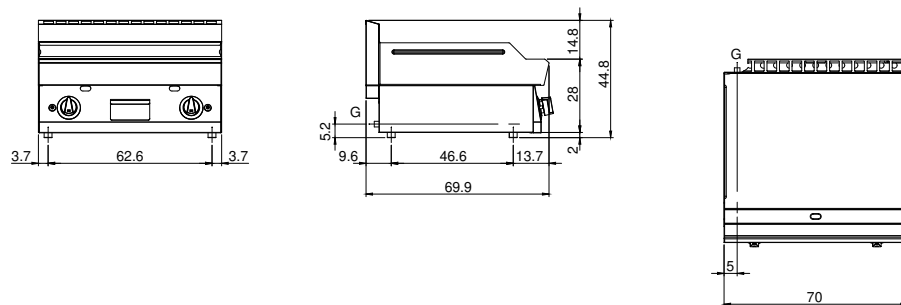
Modularity:	Top
Dimensions (mm):	700x700x300
Total gas power (Kcal/h):	9803
Total gas power (kW):	11,4
Cooking zone dimensions 1 (LxD mm):	696x520
Gas connection:	1/2"
Net volume (m3):	0,147
Packing dimensions (mm):	776x776x636
Gross weight (kg):	69
Gross volume (m3):	0,383

Features

Working top:	Made of AISI 304 stainless steel with a thickness of 10/10 mm
Material of plate:	Mild steel
Plate finish:	Smooth
Knobs:	Knobs are made from a sturdy heat-resistant polymer blend and are equipped with liquid anti-leakage washer
Plate:	In mild steel
Kit Gas:	Natural gas conversion kit 30/50 m/bar (tested with natural gas G20)

Gas griddle with satin chrome smooth plate Top in AISI 304 stainless steel thickness 10/10; covering in AISI 430 stainless steel 10/10; bottoms and internal parts in AISI 430 steel; internal reinforcements made of anti-corrosion material. (aluminised sheet metal). Cooking hotplate in satin chrome steel with high thermal conductivity for even temperature distribution. Equipped with two independent cooking zones. Provided with front groove, extractable drawer for grease collection and splash guard on three sides. Equipped with steel burner and pilot burner with piezoelectric ignition - Gas supplied by means of thermostatic safety valve with thermocouple and pilot burners for automatic burner ignition. Burners 2x 5.7 kW. Total power 11.4 kW Plate dimensions 695x520 mm.

Technical draw



G: Gas connection 1/2"