

Client \_\_\_\_\_ Quantity \_\_\_\_\_  
Project \_\_\_\_\_ Position \_\_\_\_\_

## FUN 700

Model: F70/40FTG/L/T  
Market: Extra UE

Cod: MP01372113002



### Technical data

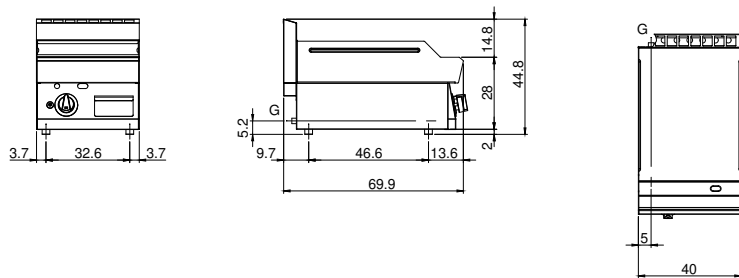
Modularity:	Top
Dimension (mm):	400x700x300
Total gas power (Kcal/h):	4902
Total gas power (kW):	5,7
Cooking zone dimensions 1 (LxD mm):	396x520
Gas connection:	1/2"
Net volume (m3):	0,084
Packing dimensions (mm):	477x776x612
Gross weight (kg):	44
Gross volume (m3):	0,227

### Features

Working top:	Made of AISI 304 stainless steel with a thickness of 10/10 mm
Material of plate:	Mild steel
Plate finish:	Smooth
Knobs:	Knobs are made from a sturdy heat-resistant polymer blend and are equipped with liquid anti-leakage washer
Plate:	In mild steel
Kit Gas:	Natural gas conversion kit 30/50 m/bar (tested with natural gas G20)

Gas griddle with smooth plate top version. Top made of AISI 304 stainless steel thickness 8/10; covering in AISI 304 stainless steel thickness 8/10; external reinforcements made of anti-corrosion material (aluminised sheet metal); bottoms and internal parts in AISI 430 steel; flue cover in enameled steel. Provided with front groove, extractable drawer for grease collection and splash guard on three sides. Equipped with steel burner with pilot burner with piezoelectric ignition. Gas supplied by means of safety valve with thermocouple. - 1 burner x 5.7 kW. Plate dimensions 395x550 mm. Can be set up on "bridge system", or on neutral base with optional doors

## Technical draw



G: Gas connection 1/2"