

Client _____ Quantity _____
Project _____ Position _____

FUN 650

Model: F65/100FTG/L/T
Market: Extra UE

Cod: MP01372112010



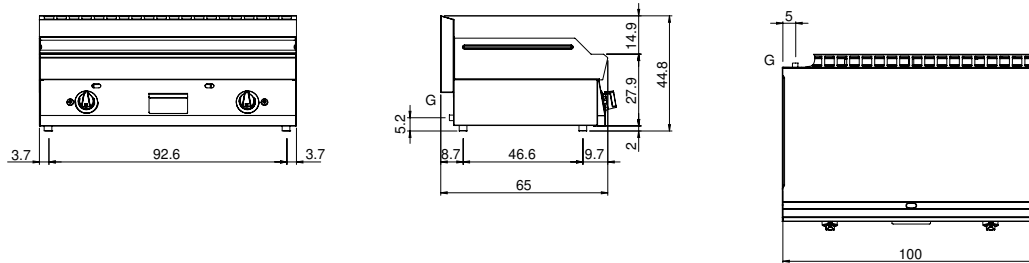
Technical data

| | |
|-------------------------------------|--------------|
| Modularity: | Top |
| Dimension (mm): | 1000x650x300 |
| Total gas power (Kcal/h): | 9803 |
| Total gas power (kW): | 11,4 |
| Cooking zone dimensions 1 (LxD mm): | 996x520 |
| Gas connection: | 1/2" |
| Net volume (m3): | 0,195 |
| Packing dimensions (mm): | 1076x763x636 |
| Gross weight (kg): | 103 |
| Gross volume (m3): | 0,522 |

Features

| | |
|------------------------------|--|
| Working top: | Made of AISI 304 stainless steel with a thickness of 10/10 mm |
| Material of plate: | Mild steel |
| Plate finish: | Smooth |
| Knobs: | Knobs are made from a sturdy heat-resistant polymer blend and are equipped with liquid anti-leakage washer |
| Liquid collection container: | Estraibile e lavabile in lavastoviglie |
| Plate: | In mild steel |
| Upright Splash guard: | On two sides |
| Kit Gas: | Natural gas conversion kit 30/50 m/bar (tested with natural gas G20) |

Technical draw



G: Gas connection 1/2"