

Client \_\_\_\_\_ Quantity \_\_\_\_\_  
Project \_\_\_\_\_ Position \_\_\_\_\_

## FUN 650

Model: F65/70FTG/LR/T  
Market: Extra UE

Cod: MP01372112006



### Technical data

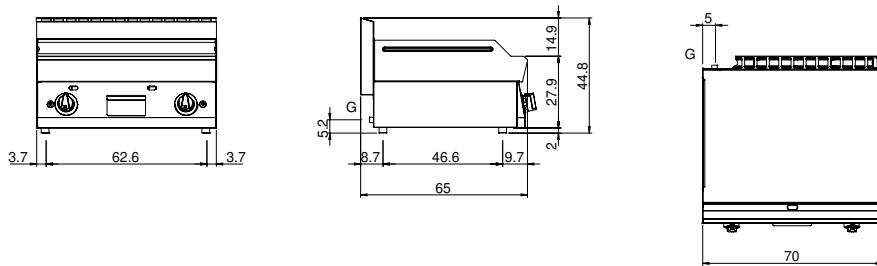
Modularity:	Top
Dimension (mm):	700x650x300
Total gas power (Kcal/h):	9803
Total gas power (kW):	11,4
Cooking zone dimensions 1 (LxD mm):	696x520
Gas connection:	1/2"
Net volume (m3):	0,137
Packing dimensions (mm):	776x776x636
Gross weight (kg):	67
Gross volume (m3):	0,383

### Features

Working top:	Made of AISI 304 stainless steel with a thickness of 10/10 mm
Material of plate:	Mild steel
Knobs:	Knobs are made from a sturdy heat-resistant polymer blend and are equipped with liquid anti-leakage washer
Liquid collection container:	Removable and dishwasher safe
Plate:	In mild steel
Upright Splash guard:	On two sides
Kit Gas:	Natural gas conversion kit 30/50 m/bar (tested with natural gas G20)

Gas griddle with plate 2/3 Smooth 1/3 grooved Top in AISI 304 stainless steel thickness 8/10; covering in AISI 430 stainless steel 8/10; bottoms and internal parts in AISI 430 steel; internal reinforcements made of anti-corrosion material. (aluminised sheet metal). Equipped with two independent cooking zones. Provided with front groove, extractable drawer for grease collection and splash guard on three sides. Equipped with steel burner and pilot burners with piezoelectric ignition - Gas supplied by means of safety valve with thermocouple and pilot burner for automatic burner ignition. Burners 2x 5.7 kW. Total power 11.4 kW Plate dimensions 695x520 mm.

## Technical draw



G: Gas connection 1/2"