

Client \_\_\_\_\_ Quantity \_\_\_\_\_  
Project \_\_\_\_\_ Position \_\_\_\_\_

## FUN 650

Model: F65/40FTG/R/T  
Market: Extra UE

Cod: MP01372112003



### Technical data

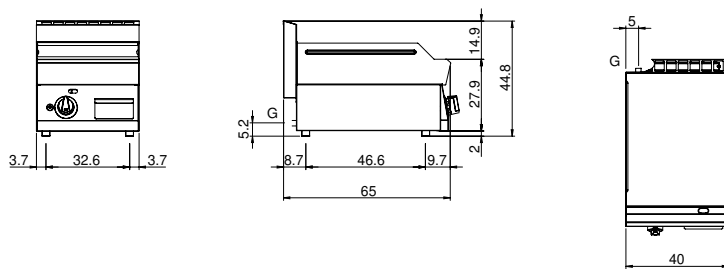
Modularity:	Top
Dimension (mm):	400x650x300
Total gas power (Kcal/h):	4902
Total gas power (kW):	5,7
Cooking zone dimensions 1 (LxD mm):	396x520
Gas connection:	1/2"
Net volume (m3):	0,078
Packing dimensions (mm):	477x776x612
Gross weight (kg):	41
Gross volume (m3):	0,227

### Features

Working top:	Made of AISI 304 stainless steel with a thickness of 10/10 mm
Material of plate:	Mild steel
Plate finish:	Ribbed
Knobs:	Knobs are made from a sturdy heat-resistant polymer blend and are equipped with liquid anti-leakage washer
Liquid collection container:	Removable and dishwasher safe
Plate:	In mild steel
Upright Splash guard:	On two sides
Kit Gas:	Natural gas conversion kit 30/50 m/bar (tested with natural gas G20)

Gas griddle with grooved plate Top in AISI 304 stainless steel thickness 8/10; covering in AISI 430 stainless steel 8/10; bottoms and internal parts in AISI 430 steel; internal reinforcements made of anti-corrosion material. (aluminised sheet metal). Provided with front groove, extractable drawer for grease collection and splash guard on three sides. Equipped with steel burner and pilot burner with piezoelectric ignition - Gas supplied by means of safety valve with thermocouple and pilot burner for automatic burner ignition. 1 burner x 5.7 kW. Plate dimensions 395x520 mm.

## Technical draw



G: Gas connection 1/2"