

Client _____ Quantity _____
Project _____ Position _____

FUN 600

Model: F60/60FTG/CLR/T

Cod: MP01372111007



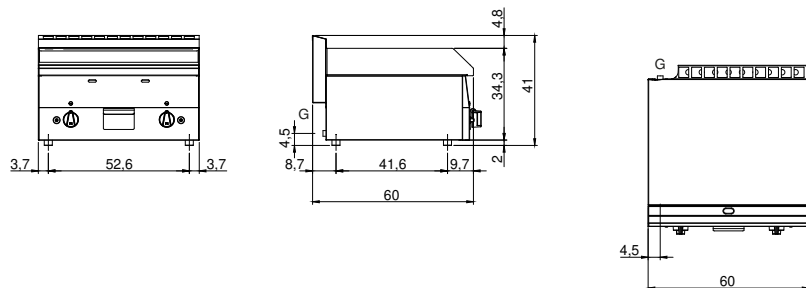
Technical data

Modularity:	Top
Dimension (mm):	600x600x300
Total gas power (Kcal/h):	8943
Total gas power (kW):	10,4
Cooking zone dimensions 1 (LxD mm):	596x470
Gas connection:	1/2"
Net volume (m3):	0,108
Packing dimensions (mm):	676x695x630
Gross weight (kg):	50
Gross volume (m3):	0,296

Features

Working top:	Realizzato in acciaio inox AISI 304 con spessore 8/10 mm
Material of plate:	Polished chrome
Knobs:	Knobs are made from a sturdy heat-resistant polymer blend
Flue:	Made in a single piece, which facilitates the alignment of the modules
Liquid collection container:	Estraibile e lavabile in lavastoviglie
Plate:	Polished chromed plate
Upright Splash guard:	On two sides
Kit Gas:	Natural gas conversion kit 30/50 m/bar (tested with natural gas G20)

Technical draw



G: Gas connection 1/2"

Electric solid top with 4 zones, counter top model. Side panels, bottom and back made in stainless steel. Top made in AISI 304 thickness 20/10 with control edge for liquid collection designed for flush alignment. Rear flue made in enamelled cast-iron. Cooking plate made with high thick steel 16M06. 4 independent cooking zones each with 3.4 kW power, marked with a satin cooking surface. Safety thermostat with automatic recovery. Lamp to indicate heating activation and proper working of the equipment. Special design knobs to avoid water penetration in the control panel. Adjustable feet. IPX5 protection rating. Electric power supply VAC 400 3N 50÷60 Hz - 13,6 kW.