

Client _____ Quantity _____

Project _____ Position _____

FUN 600

Model: F60/30FTG/CR/T

Cod: MP01372111004



Technical data

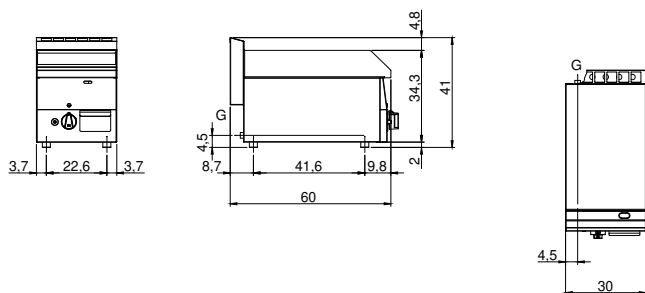
Modularity:	Top
Dimensions (mm):	300x600x300
Total gas power (Kcal/h):	4472
Total gas power (kW):	5,2
Cooking zone dimensions 1 (LxD mm):	296x470
Gas connection:	1/2"
Net volume (m3):	0,054
Packing dimensions (mm):	376x695x596
Gross weight (kg):	35
Gross volume (m3):	0,156

Features

Working top:	Made of AISI 304 stainless steel with a thickness of 8/10 mm
Material of plate:	Polished chrome
Plate finish:	Ribbed
Knobs:	Knobs are made from a sturdy heat-resistant polymer blend
Flue:	Made in a single piece, which facilitates the alignment of the modules
Liquid collection container:	Removable and dishwasher safe
Plate:	Polished chromed plate
Upright Splash guard:	On two sides
Kit Gas:	Natural gas conversion kit 30/50 m/bar (tested with natural gas G20)

Gas griddle with polished chromed grooved plate Top with deep funnel in AISI 304 stainless steel; covering in AISI 430 stainless steel thickness 8/10; bottoms and internal parts in anti-corrosion material (aluminised sheet metal). Cooking hotplate in chromed steel with high thermal conductivity for even temperature distribution. Provided with front groove, extractable drawer for grease collection and splash guard on three sides. Steel burner with pilot burner with piezoelectric ignition. Gas supplied by means of thermostatic safety valve with thermocouple. 1 burner x 5.2 kW. - Total power 5.2 kW - Plate dimensions 295x470 mm.

Technical draw



G: Gas connection 1/2"