



Client _____ Quantity _____
Project _____ Position _____

ROC 900

Model: R90/40SPE/P

Cod: MP01334124003

Technical data

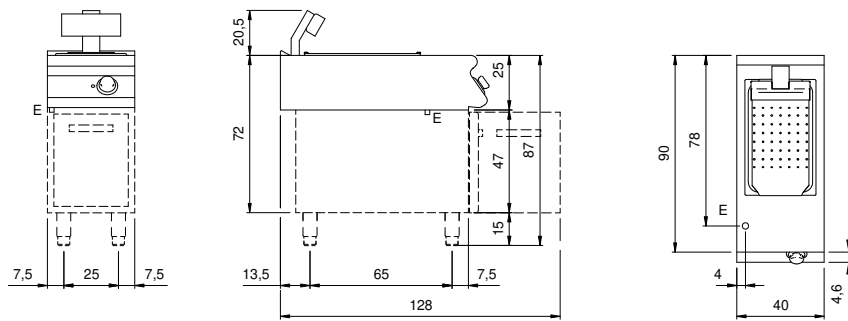
Modularity:	On cabinet with door
Dimension (mm):	400x900x870
Total electric power (kW):	1
Nr. Wells:	1
Well litres 1:	25,5
Well dimensions 1 (mm):	530x325x150
Electric power (V):	220-240
Ampere (A):	5
Phases:	1
Cable section (mmq):	3G1
Frequency (Hz):	50-60
Net volume (m3):	0,313
Packing dimensions (mm):	480x1026x1075
Gross weight (kg):	48,6
Gross volume (m3):	0,529

Features

Working top:	Made of AISI 304 stainless steel with a thickness of 20/10 mm
Knobs:	Made of aluminum with IPX5 water protection
Handles:	The brushed aluminum handles allow for a secure and sturdy grip with a ergonomic lines
Heating:	Infrared ceramic heating elements

Heated chip dump, model on counter with door. Side panels, bottom and back made in stainless steel. Top made in AISI 304 thickness 20/10. designed for flush alignment. Louvered double bottom ot permit the drip of excess oil. Well suitable for GN 1/1 containers with 150 mm max. height. Infreared lamp located on the upper part for food heating. ON/OFF switch located on the board panel. Special design knobs to avoid water penetration in the control panel. Base completely made in stainless steel. Pressed hinged door. Ergonomic handle. Adjustable feet made in stainless steel. IPX5 protection rating. Electric power supply VAC 230 1N 50÷60 Hz - 1 kW.

Technical draw



E: Electric power