

Client _____ Quantity _____
 Project _____ Position _____

FUN 700

Model: F70/40SPE/T

Cod: MP01332123000



Technical data

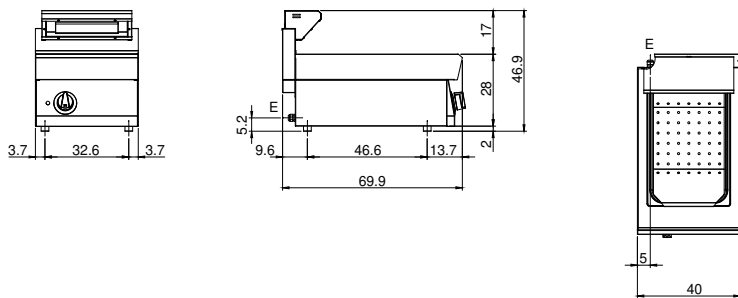
Modularity:	Top
Dimensions (mm):	400x700x300
Total electric power (kW):	1
Nr. Wells:	1
Well litres 1:	25,5
Well dimensions 1 (mm):	325x530x150
Electric power (V):	220-240
Ampere (A):	5
Phases:	1
Cable section (mmq):	3G1
Frequency (Hz):	50-60
Net volume (m3):	0,084
Packing dimensions (mm):	477x776x612
Gross weight (kg):	25
Gross volume (m3):	0,227

Features

Working top:	Made of AISI 304 stainless steel with a thickness of 10/10 mm
Knobs:	Knobs are made from a sturdy heat-resistant polymer blend and are equipped with liquid anti-leakage washer
Heating:	Infrared ceramic heating elements

Heated chip dump, model on open cabinet. Side panels, bottom and back made in stainless steel. Top made in AISI 304 thickness 20/10. designed for flush alignment. Louvered double bottom ot permit the drip of excess oil. Well suitable for GN 1/1 containers with 150 mm max. height. Infreared lamp located on the upper part for food heating. ON/OFF switch located on the board panel. Special design knobs to avoid water penetration in the control panel. Base completely made in stainless steel. Adjustable feet made in stainless steel. IPX5 protection rating. Electric power supply VAC 230 1N 50±60 Hz - 1 kW.

Technical draw



E: Electric power