



Client _____ Quantity _____

Project _____ Position _____

ROC 1100

Model: R110/80FRGV/2V22/P

Cod: MP01295115004

Technical data

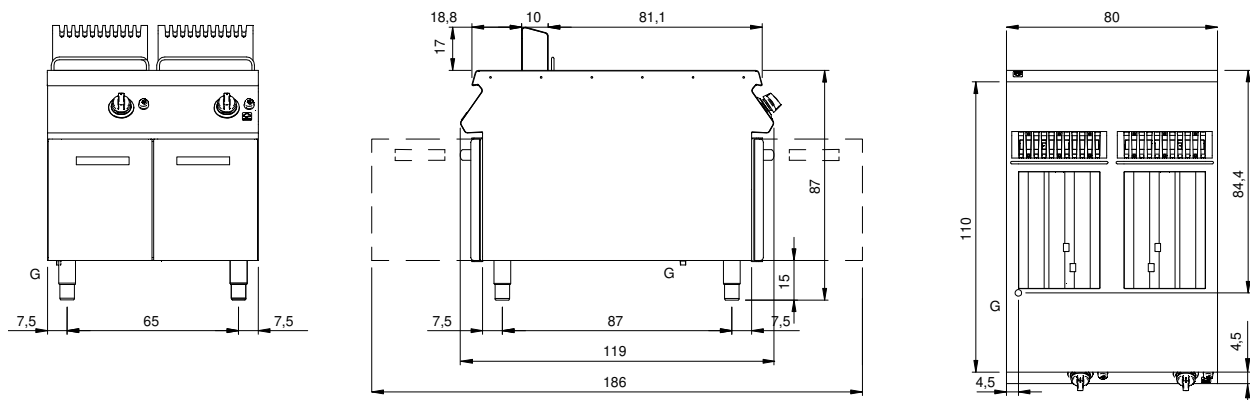
Modularity:	On cabinet with doors
Dimensions (mm):	800x1100x870
Total gas power (Kcal/h):	34394
Total gas power (kW):	40
Nr. Wells:	2
Well litres 1:	22
Well litres 2:	22
Well dimensions 1 (mm):	309x442x318
Well dimensions 2 (mm):	309x442x318
Gas connection:	1/2"
Net volume (m3):	0,766
Packing dimensions (mm):	880x1272x1274
Gross weight (kg):	115
Gross volume (m3):	1,426

Features

Working top:	Made of AISI 304 stainless steel with a thickness of 2 mm
Type of heating:	Direct
Knobs:	Made of aluminum with IPX5 water protection
Heating:	Heating pipes in the well
Kit Gas:	Natural gas conversion kit 30/50 m/bar (tested with natural gas G20)

Gas fryer with 2 wells 22+22 liters, model on cabinet with doors. Side panels, bottom and back made of stainless steel. Top made of AISI 304 thickness 20/10 designed for flush alignment. Rear flue made of stainless steel. Deep pressed wells with front expansion zone for oil collection and cold zone for food particles collection. Heating by means of high efficiency stainless steel burners located inside the well. Ignition by means of piezoelectric device. Safety thermostat with manual reset. With 1 basket 1/1 and 2 basket 1/2 made of chrome plated steel and plastic handle. Doors with stainless steel tubular handle. Adjustable feet made of stainless steel. IPX5 protection rating. Gas total power 40 kW.

Technical draw



G: Gas connection 1/2"