



Client \_\_\_\_\_ Quantity \_\_\_\_\_  
Project \_\_\_\_\_ Position \_\_\_\_\_

## ROC 1100

Model: R110/40FRGV/1V22/P

Cod: MP01295115003

### Technical data

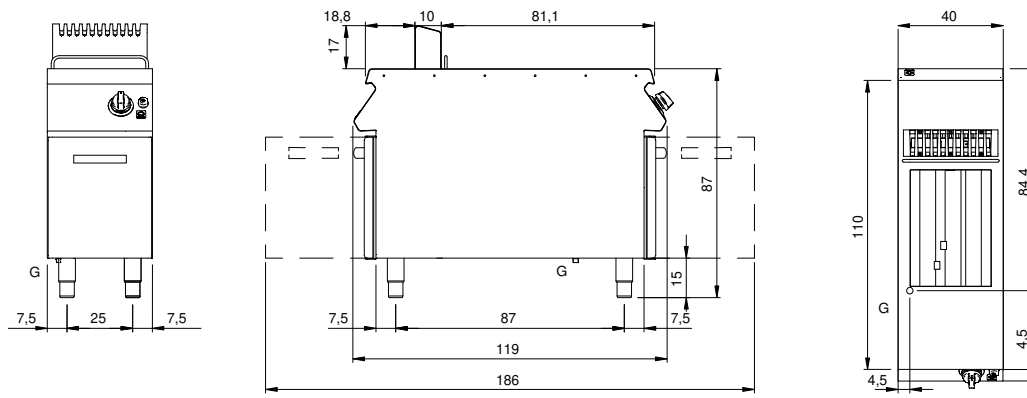
Modularity:	On cabinet with doors
Dimension (mm):	400x1100x870
Total gas power (Kcal/h):	17197
Total gas power (kW):	20
Nr. Wells:	1
Well litres 1:	22
Well dimensions 1 (mm):	309x442x318
Gas connection:	1/2"
Net volume (m3):	0,383
Packing dimensions (mm):	480x1272x1240
Gross weight (kg):	97
Gross volume (m3):	0,757

### Features

Burners:	In the well
Working top:	Made of AISI 304 stainless steel with a thickness of 2 mm
Type of heating:	Direct
Knobs:	Made of aluminum with IPX5 water protection
Kit Gas:	Natural gas conversion kit 30/50 m/bar (tested with natural gas G20)

Friggitrice gas 1 vasca 22 liters, model on cabinet with door. Side panels, bottom and back made of stainless steel. Top made of AISI 304 thickness 20/10 designed for flush alignment. Rear flue made of stainless steel. Deep pressed well with front expansion zone for oil collection and cold zone for food particles collection. Heating by means of high efficiency stainless steel burners located inside the well. Ignition by means of piezoelectric device. Safety thermostat with manual reset. Equipped with 1 basket made of chrome plated steel and plastic handle. Doors with stainless steel tubular handle. Adjustable feet made of stainless steel. IPX5 protection rating. Gas total power 20 kW.

## Technical draw



G: Gas connection 1/2"