



Client _____ Quantity _____

Project _____ Position _____

ROC 1100

Model: R110/40FRGV/1V13/P

Cod: MP01295115001

Technical data

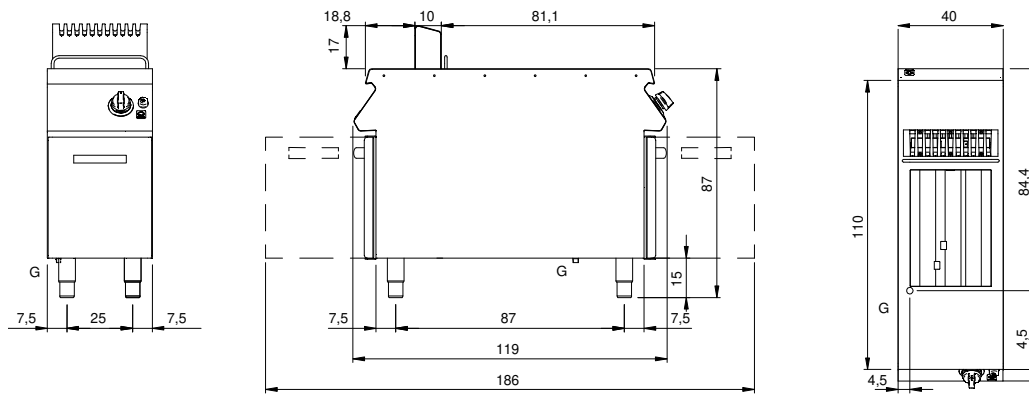
Modularity:	On cabinet with doors
Dimensions (mm):	400x1100x870
Total gas power (Kcal/h):	10319
Total gas power (kW):	12
Nr. Wells:	1
Well litres 1:	13
Well dimensions 1 (mm):	240x342x318
Gas connection:	1/2"
Net volume (m3):	0,383
Packing dimensions (mm):	480x1272x1240
Gross weight (kg):	66
Gross volume (m3):	0,757

Features

Working top:	Made of AISI 304 stainless steel with a thickness of 2 mm
Type of heating:	Direct
Knobs:	Made of aluminum with IPX5 water protection
Heating:	Heating pipes in the well
Kit Gas:	Natural gas conversion kit 30/50 m/bar (tested with natural gas G20)

Gas fryer with 1 well 13 liters, model on cabinet with door. Side panels, bottom and back made of stainless steel. Top made of AISI 304 thickness 20/10 designed for flush alignment. Rear flue made of stainless steel. Deep pressed well with front expansion zone for oil collection and cold zone for food particles collection. Heating by means of high efficiency stainless steel burners located inside the well. Ignition by means of piezoelectric device. Safety thermostat with manual reset. Equipped with 1 basket made of chrome plated steel and plastic handle. Adjustable feet made of stainless steel. Doors with stainless steel tubular handle. IPX5 protection rating. Gas total power 12 kW.

Technical draw



G: Gas connection 1/2"