

Client _____ Quantity _____
Project _____ Position _____

FUN 650

Model: F65/40FRES/1V10/T

Cod: MP01292122000



Technical data

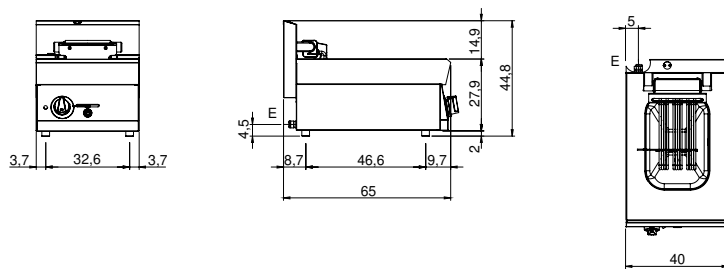
Modularity:	Top
Dimension (mm):	400x650x300
Total electric power (kW):	9
Nr. Wells:	1
Well litres 1:	10
Well dimensions 1 (mm):	244x364x169
Electric power (V):	380-415
Ampere (A):	14
Phases:	3N
Cable section (mmq):	5G2,5
Frequency (Hz):	50-60
Net volume (m3):	0,078
Packing dimensions (mm):	477x776x612
Gross weight (kg):	22
Gross volume (m3):	0,227

Features

Working top:	Made of AISI 304 stainless steel with a thickness of 10/10 mm
Type of heating:	Direct
Knobs:	Knobs are made from a sturdy heat-resistant polymer blend and are equipped with liquid anti-leakage washer
Heating:	Tilting heating elements for efficient cleaning

Electric fryer 1 vat capacity 10 lt. The top and the vat are made entirely of 18/10 stainless steel. Equipped with ball cock located on control panel and safety insertion elbow for extracting oil from the vat. Pressed tub in 18/10 stainless steel with rounded corners. Heated by means of 3 shielded heating elements which can be tipped up for cleaning. Temperature controlled by thermostat from 100-180° C. Main switch. Safety thermostat. 1 basket 30x22x11h. cm. with thermoplastic handle and 1 vat filter included. Tub capacity in lt. 10. Tub dimensions 250x370x210h. mm. Indicator lights to show electrical power supplied and heating elements in operation. Total power 9 kW Electrical power supply V AC 400+3N 50÷60 Hz.

Technical draw



E: Electric power