

Client _____ Quantity _____
Project _____ Position _____

FUN 600

Model: F60/60FRGV/2V8/T

Cod: MP01292111001



Technical data

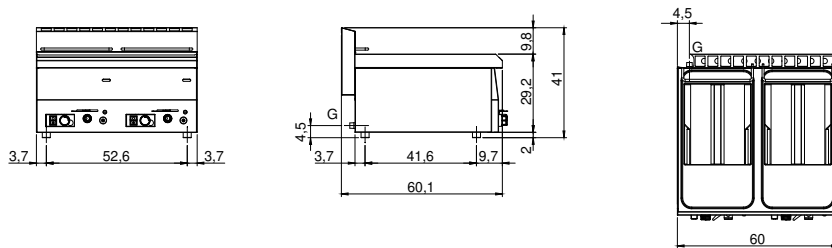
Modularity:	Top
Dimensions (mm):	600x600x300
Total gas power (Kcal/h):	11694
Total gas power (kW):	13,6
Nr. Wells:	2
Well litres 1:	8
Well litres 2:	8
Well dimensions 1 (mm):	247x300x210
Well dimensions 2 (mm):	247x300x210
Gas connection:	1/2"
Net volume (m3):	0,108
Packing dimensions (mm):	676x695x630
Gross weight (kg):	42
Gross volume (m3):	0,296

Features

Working top:	Made of AISI 304 stainless steel with a thickness of 8/10 mm
Type of heating:	Direct
Knobs:	Knobs are made from a sturdy heat-resistant polymer blend
Heating:	Heating pipes in the well
Kit Gas:	Natural gas conversion kit 30/50 m/bar (tested with natural gas G20)

Gas fryer, 2 vats capacity 8 lt.+8 lt. The top and the vats are made of entirely AISI 304 stainless steel; covering in AISI 430 stainless steel thickness 8/10; bottoms and internal parts in anti-corrosion material (aluminised sheet metal). Equipped with drain tap located on the control panel and elbow with safety insertion for removal of oil from tub. Equipped with steel horizontal flame burners with piezoelectric pilot light. Gas supplied by means of thermostatic safety valve with thermocouple; safety thermostat. Capacity of each vat 8 litres. Each vat is provided with 1 basket 230x260x110h mm with thermoplastic handle and 1 vat filter. Total power 13.6 kW

Technical draw



G: Gas connection 1/2"