

Client _____ Quantity _____

Project _____ Position _____

FUN 600

Model: F60/30FRGV/1V8/T

Cod: MP01292111000



Technical data

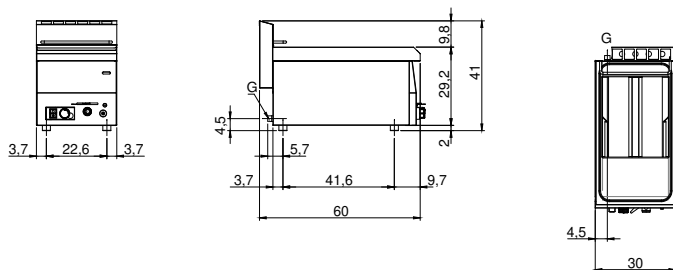
Modularity:	Top
Dimension (mm):	300x600x300
Total gas power (Kcal/h):	5847
Total gas power (kW):	6,8
Nr. Wells:	1
Well litres 1:	8
Well dimensions 1 (mm):	247x300x210
Gas connection:	1/2"
Net volume (m3):	0,054
Packing dimensions (mm):	376x695x596
Gross weight (kg):	24,5
Gross volume (m3):	0,156

Features

Working top:	Made of AISI 304 stainless steel with a thickness of 8/10 mm
Type of heating:	Direct
Knobs:	Knobs are made from a sturdy heat-resistant polymer blend
Kit Gas:	Natural gas conversion kit 30/50 m/bar (tested with natural gas G20)

Gas fryer with 1 vat capacity 8 lt. The top and the vat are made of entirely AISI 304 stainless steel; covering in AISI 430 stainless steel thickness 8/10; bottoms and internal parts in anti-corrosion material (aluminised sheet metal). Equipped with drain tap located on the control panel and elbow with safety insertion for removal of oil from tub. Equipped with steel horizontal flame burners with piezoelectric pilot light. Gas supplied by means of thermostatic safety valve with thermocouple; safety thermostat. Tub capacity 8 litres. Equipped with 1 basket 230x260x110h mm with thermoplastic handle and 1 vat filter. Total power 6.8 kW.

Technical draw



G: Gas connection 1/2"