



Client _____ Quantity _____
Project _____ Position _____

ROC 900

Model: R90/80BME/P

Cod: MP01254124005

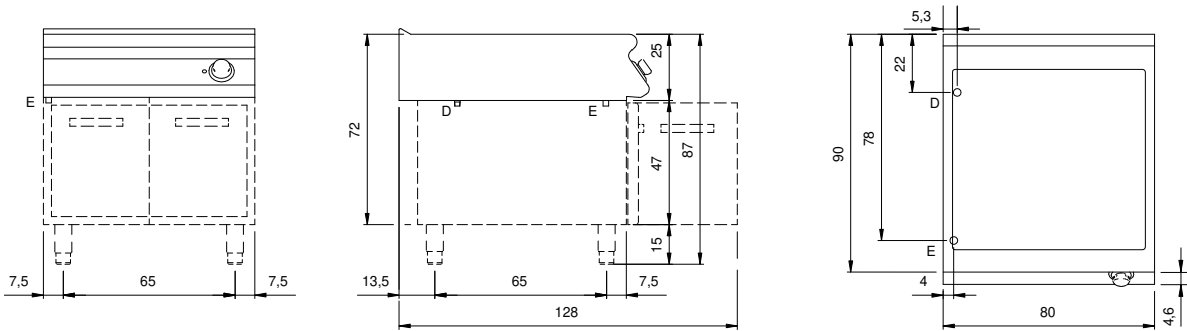
Technical data

Modularity:	On cabinet with doors
Dimension (mm):	800x900x870
Total electric power (kW):	4,4
Nr. Wells:	1
Well litres 1:	52
Well dimensions 1 (mm):	730x685x155
Electric power (V):	380-415
Ampere (A):	10
Phases:	3N
Cable section (mmq):	5G1,5
Frequency (Hz):	50-60
Drain size:	1"
Net volume (m3):	0,626
Packing dimensions (mm):	880x1026x1109
Gross weight (kg):	84,3
Gross volume (m3):	1,001

Features

Working top:	Made of AISI 304 stainless steel with a thickness of 20/10 mm
Knobs:	Made of aluminum with IPX5 water protection
Handles:	The brushed aluminum handles allow for a secure and sturdy grip with a ergonomic lines
Water inflow:	Manual input

Technical draw



E: Electric power

D: Drain for water