



Client \_\_\_\_\_ Quantity \_\_\_\_\_

Project \_\_\_\_\_ Position \_\_\_\_\_

## ROC 900

Model: R90/80BMG/P

Cod: MP01254114005

### Technical data

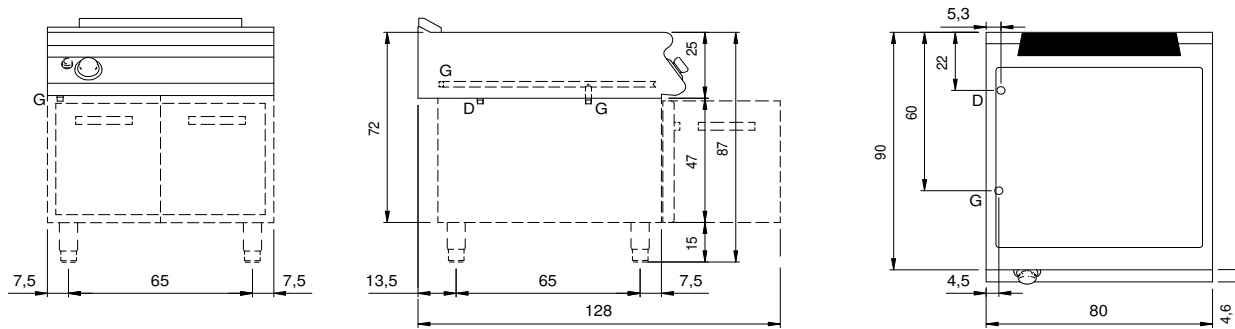
Modularity:	On cabinet with doors
Dimension (mm):	800x900x870
Total gas power (Kcal/h):	5160
Total gas power (kW):	6
Nr. Wells:	1
Well litres 1:	52
Well dimensions 1 (mm):	730x685x155
Gas connection:	1/2"
Drain size:	1"
Net volume (m3):	0,626
Packing dimensions (mm):	880x1026x1109
Gross weight (kg):	87
Gross volume (m3):	1,001

### Features

Working top:	Made of AISI 304 stainless steel with a thickness of 20/10 mm
Knobs:	Made of aluminum with IPX5 water protection
Handles:	The brushed aluminum handles allow for a secure and sturdy grip with a ergonomic lines
Flue:	Removable made of cast iron
Water inflow:	Manual input
Kit Gas:	Natural gas conversion kit 30/50 m/bar (tested with natural gas G20)

Gas bain-marie 2 GN (1/1 + 1/3), model on cabinet with doors. Side panels, bottom and back made in stainless steel. Top made in AISI 304 thickness 20/10 designed for flush alignment. Rear flue made in enamelled cast-iron. Well made in stainless steel AISI 304. Heating by means of steel burner with stabilized flame complete with pilot flame and safety thermocouple. Gas supply by means of safety tap with temperature regulation from 30 °C to 90 °C. Ignition by piezoelectric device. Water drain by means of overflow system and vertical drain. Special design knobs to avoid water penetration in the control panel. Base completely made in stainless steel. Presses hinged doors Ergonomic handles. Adjustable feet made in stainless steel. IPX5 protection rating. Gas total power 6 kW.

## Technical draw



G: Gas connection 1/2"

D: Drain for water