



Client _____ Quantity _____
Project _____ Position _____

ROC 900

Model: R90/40BMG/A

Cod: MP01254114001

Technical data

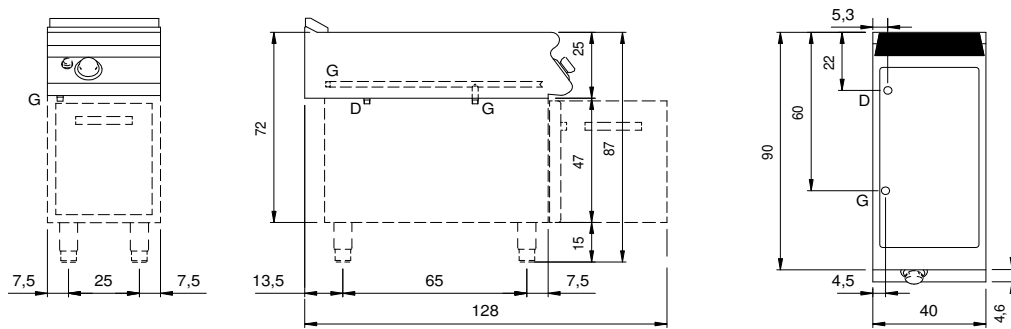
Modularity:	On open cabinet
Dimension (mm):	400x900x870
Total gas power (Kcal/h):	2580
Total gas power (kW):	3
Nr. Wells:	1
Well litres 1:	25
Well dimensions 1 (mm):	351x685x155
Gas connection:	1/2"
Drain size:	1"
Net volume (m3):	0,313
Packing dimensions (mm):	480x1026x1075
Gross weight (kg):	50,1
Gross volume (m3):	0,529

Features

Working top:	Made of AISI 304 stainless steel with a thickness of 20/10 mm
Knobs:	Made of aluminum with IPX5 water protection
Flue:	Removable made of cast iron
Water inflow:	Manual input
Kit Gas:	Natural gas conversion kit 30/50 m/bar (tested with natural gas G20)

Gas bain-marie GN 1/1 + 1/3, model on open cabinet. Side panels, bottom and back made in stainless steel. Top made in AISI 304 thickness 20/10 designed for flush alignment. Rear flue made in enamelled cast-iron. Well made in stainless steel AISI 304. Heating by means of steel burner with stabilized flame complete with pilot flame and safety thermocouple. Gas supply by means of safety tap with temperature regulation from 30 °C to 90 °C. Ignition by piezoelectric device. Water drain by means of overflow system and vertical drain. Special design knobs to avoid water penetration in the control panel. Base completely made in stainless steel. Adjustable feet made in stainless steel. IPX5 protection rating. Gas total power 3 kW.

Technical draw



G: Gas connection 1/2"

D: Drain for water