

Client _____ Quantity _____
Project _____ Position _____

FUN 650

Model: F65/40BME/T

Cod: MP01252122000



Technical data

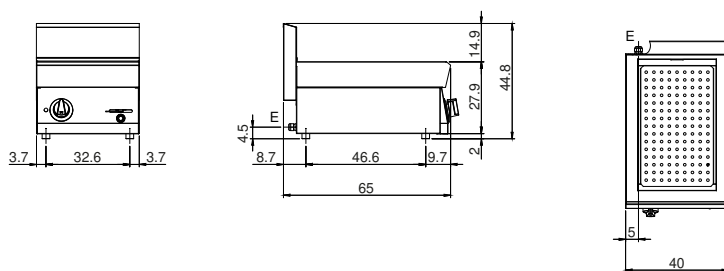
Modularity:	Top
Dimension (mm):	400x650x300
Total electric power (kW):	1,5
Nr. Wells:	1
Well litres 1:	16
Well dimensions 1 (mm):	305x510x155
Electric power (V):	220-240
Ampere (A):	7
Phases:	1
Cable section (mmq):	3G1,5
Frequency (Hz):	50-60
Drain size:	1/2"
Net volume (m3):	0,078
Packing dimensions (mm):	477x776x612
Gross weight (kg):	22
Gross volume (m3):	0,227

Features

Working top:	Made of AISI 304 stainless steel with a thickness of 10/10 mm
Knobs:	Knobs are made from a sturdy heat-resistant polymer blend and are equipped with liquid anti-leakage washer
Water inflow:	Manual input

Electric bain marie The top, bowl and false bottom are made of AISI 304 stainless steel. Covering in AISI 304 stainless steel thickness 8/10; bottoms and internal parts in AISI 430 steel; internal reinforcements made of anti-corrosion material (aluminised sheet metal). Bowl size GN 1/1. Suitable for insertion of GN bowls up to h. 150 mm. False bottom included. Tub with front water draining by means of ball cock. Main switch. Thermostat adjustable from 30° to 90° C. Shielded heating elements located outside the tub. Indicator lights to show electrical power supplied and heating elements in operation. 1 heating element of 1.5 kW. Total power 1.5 kW Electrical power supply VAC 230+1 50÷60 Hz. Bowls not included.

Technical draw



E: Electric power