

Client _____ Quantity _____

Project _____ Position _____

FUN 600

Model: F60/60BME/T

Cod: MP01252121001



Technical data

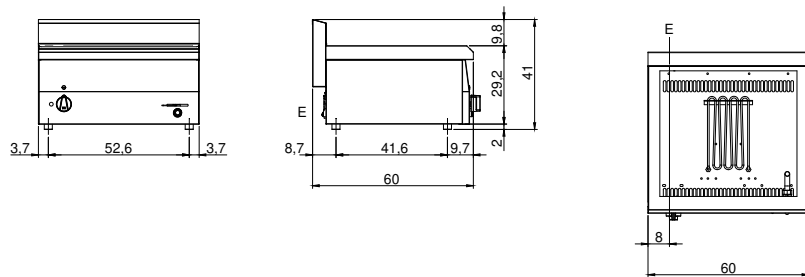
Modularity:	Top
Dimension (mm):	600x600x300
Total electric power (kW):	3
Nr. Wells:	1
Well litres 1:	31
Well dimensions 1 (mm):	510x467x185
Electric power (V):	220-240
Ampere (A):	14
Phases:	1
Cable section (mmq):	3G2,5
Frequency (Hz):	50-60
Drain size:	1/2"
Net volume (m3):	0,108
Packing dimensions (mm):	676x695x630
Gross weight (kg):	32
Gross volume (m3):	0,296

Features

Working top:	Made of AISI 304 stainless steel with a thickness of 8/10 mm
Knobs:	Knobs are made from a sturdy heat-resistant polymer blend
Water inflow:	Manual input

Electric bain marie The top, the bowl and the false bottom are made of AISI 304 stainless steel; covering in AISI 430 stainless steel thickness 8/10; bottoms and internal parts in anti-corrosion material (aluminised sheet metal). Tub dimensions are 510x465x150h. Equipped with a control for water drainage by means of ball cock located on the control panel. Heating occurs by means of shielded heating elements which are thermostat controlled in a range of use from 30 to 90°C. Equipped with indicator lights to signal proper operation. 1 false bottom included. 1 heating element of 3 kW. Total power 3 kW. Electrical power supply VAC 230+1 50÷60 Hz. Bowls not included.

Technical draw



E: Electric power