



Client \_\_\_\_\_ Quantity \_\_\_\_\_  
Project \_\_\_\_\_ Position \_\_\_\_\_

## ROC 700

Model: R70/80CPE/2V26/P

Cod: MP01214123002

### Technical data

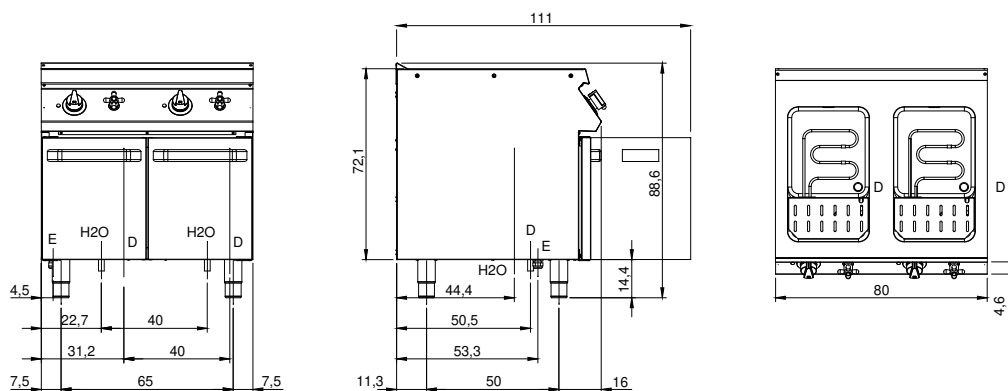
Modularity:	On cabinet with doors
Dimension (mm):	800x730x870
Total electric power (kW):	11,2
Nr. Wells:	2
Well litres 1:	26
Well litres 2:	26
Well dimensions 1 (mm):	306x342x318
Well dimensions 2 (mm):	306x342x318
Electric power (V):	380-415
Ampere (A):	17,5
Phases:	3N
Cable section (mmq):	5G2,5
Frequency (Hz):	50-60
Cold water inflow:	3/4" + 3/4"
Cold water pressure (bar):	Max pressure 5 bar
Drain size:	1" + 1"
Net volume (m3):	0,508
Packing dimensions (mm):	880x856x1109
Gross weight (kg):	79,6
Gross volume (m3):	0,835

### Features

Working top:	Made of AISI 304 stainless steel with a thickness of 20/10 mm
Knobs:	Made of aluminum with IPX5 water protection
Water inflow:	With tap

Electric pasta cookers with 2 wells capacity 26+26 liters. Side panels, bottom and back made in stainless steel. Pressed top made in AISI 304 thickness 20/10 with overflow control edge designed for flush alignment. Deep drawn wells in AISI 316 polished stainless steel with radiused bottom. Pressure switch to stop heating in case the well is empty. Fast filling and top-up options. Fixed water tap in stainless steel located below draining board. Heating by means of revolving armoured immersion-type heating elements. Heating control by means of energy regulator. Lamp on control panel to indicate heating activation. Water drain located inside the lower base. Special design knobs to avoid water penetration in the control panel. Adjustable feet made in stainless steel. Baskets not included. IPX5 protection rating. Electric power supply VAC 400 3N 50÷60 Hz - 11.2 kW.

## Technical draw



E: Electric power

D: Drain for water

H2O: Water inflow 3/4"