

Client _____ Quantity _____
Project _____ Position _____

FUN 600

Model: F60/60CPE/1V30/T

Cod: MP01212121001



Technical data

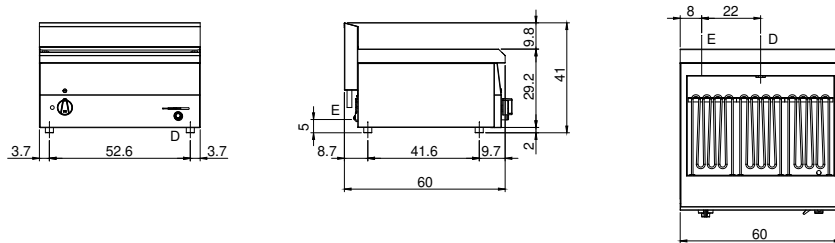
Modularity:	Top
Dimension (mm):	600x600x300
Total electric power (kW):	9
Nr. Wells:	1
Well litres 1:	30
Well dimensions 1 (mm):	551x374x190
Electric power (V):	380-415
Ampere (A):	14
Phases:	3N
Cable section (mmq):	5G2,5
Frequency (Hz):	50-60
Cold water inflow:	Connessione non presente
Drain size:	1"
Net volume (m3):	0,108
Packing dimensions (mm):	676x695x630
Gross weight (kg):	28
Gross volume (m3):	0,296

Features

Working top:	Made of AISI 304 stainless steel with a thickness of 8/10 mm
Knobs:	Knobs are made from a sturdy heat-resistant polymer blend
Water inflow:	Manual input

The top and the basket support are made of AISI 304 stainless steel; the tub is made of AISI 316 stainless steel. Cock and safety lever for draining, located on control panel. 4-position switch Shielded heating elements located inside the tub. Indicator light to show electrical power supplied and heating elements in operation. Tub capacity 30 lt. - 3 heating elements x 3 kW - Total power 9 kW - Power supply voltage V AC 400+3N 50÷60 Hz. Baskets not included.

Technical draw



E: Electric power

D: Drain for water