

Client \_\_\_\_\_ Quantity \_\_\_\_\_  
Project \_\_\_\_\_ Position \_\_\_\_\_

## ROC 700

Model: R70/40IND/T

Cod: MP01134123000



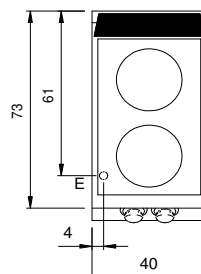
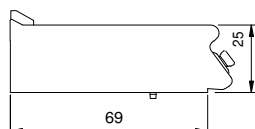
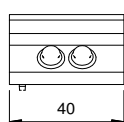
### Technical data

|                            |             |
|----------------------------|-------------|
| Modularity:                | Top         |
| Dimension (mm):            | 400x730x280 |
| Total electric power (kW): | 7           |
| Electric power (V):        | 380-415     |
| Ampere (A):                | 11          |
| Phases:                    | 3N          |
| Cable section (mmq):       | 5G2,5       |
| Frequency (Hz):            | 50-60       |
| Net volume (m3):           | 0,082       |
| Packing dimensions (mm):   | 480x856x475 |
| Gross weight (kg):         | 50,6        |
| Gross volume (m3):         | 0,195       |

### Features

|              |   |
|--------------|---|
| Working top: | Made of AISI 304 stainless steel with a thickness of 20/10 mm |
| Knobs:       | Made of aluminum with IPX5 water protection                   |
| Flue:        | Removable gas exhaust flue grill made of cast iron            |

Technical draw



E: Electric power