

Client _____ Quantity _____
 Project _____ Position _____

FUN 700

Model: F70/80IND/T

Cod: MP01132123002



Technical data

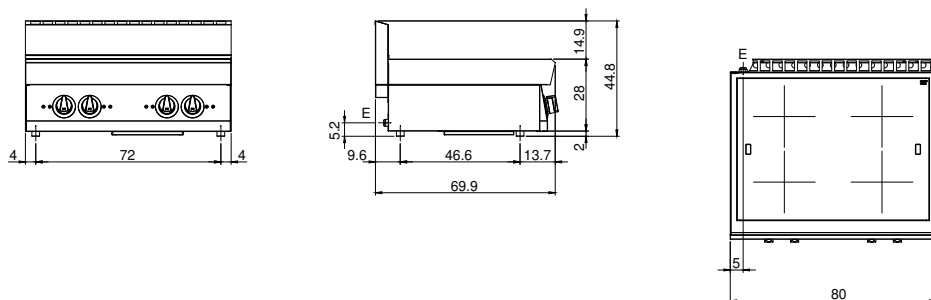
Modularity:	Top
Dimensions (mm):	800x700x300
Total electric power (kW):	14
Electric power (V):	380-415
Ampere (A):	21,5
Phases:	3N
Cable section (mmq):	5G4
Frequency (Hz):	50-60
Net volume (m3):	0,17
Packing dimensions (mm):	880x856x509
Gross weight (kg):	40,5
Gross volume (m3):	0,383

Features

Working top:	Made of AISI 304 stainless steel with a thickness of 10/10 mm
Knobs:	Knobs are made from a sturdy heat-resistant polymer blend and are equipped with liquid anti-leakage washer

Gas boiling unit with 6 burners, model on open cabinet. Side panels, bottom and back made of stainless steel. Top made of AISI 304 thickness 20/10 designed for flush alignment. Gas supply by safety taps with thermocouple and pilot burner for the automatic ignition of main burner. Radiused corners top, easy to clean, equipped with enamelled cast-iron hobs resistant to acid, alkali and flame. Equipped with high-power cast iron/brass rapid burners with containers in enamelled steel that can be extracted for easy cleaning. nr.2 burners 5.5 kW and nr.4 burners 3.7 kW. Special design knobs to avoid water penetration in the control panel. Base completely made of stainless steel. Adjustable feet made of stainless steel. IPX5 protection rating. Gas total power 25.8 kW.

Technical draw



E: Electric power