



Client \_\_\_\_\_ Quantity \_\_\_\_\_  
Project \_\_\_\_\_ Position \_\_\_\_\_

## ROC 900

Model: R90/40PVE/P

Cod: MP01094124003

### Technical data

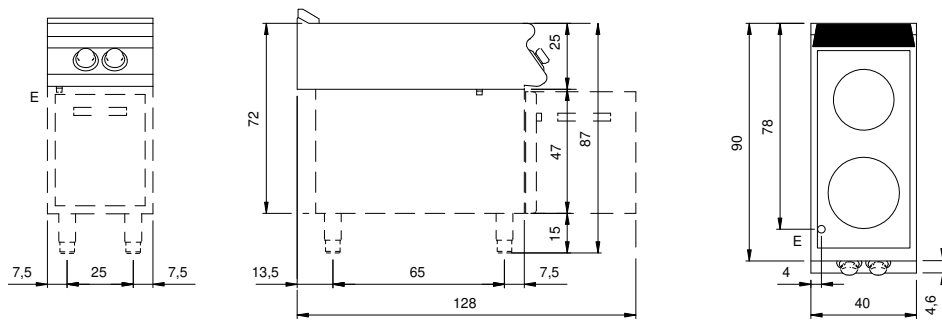
Modularity:	On cabinet with door
Dimension (mm):	400x900x870
Total electric power (kW):	6,8
Electric power (V):	380-415
Ampere (A):	15,5
Phases:	3N
Cable section (mmq):	5G2,5
Frequency (Hz):	50-60
Net volume (m3):	0,313
Packing dimensions (mm):	480x1026x1075
Gross weight (kg):	53,1
Gross volume (m3):	0,529

### Features

Working top:	Made of AISI 304 stainless steel with a thickness of 20/10 mm
Knobs:	Made of aluminum with IPX5 water protection
Handles:	The brushed aluminum handles allow for a secure and sturdy grip with a ergonomic lines
Flue:	Removable made of cast iron

Glass ceramic hob 2 with cooking zone, model on cabinet with door. Side panels, bottom and back made in stainless steel. Glass ceramic hob sealed to the top with 2 independent cooking zone each equipped with a 3 kW radiating element diam.300 mm. and relevant energy regulator. Top designed for flush alignment. Cooking zone marked with a screen printed outline on the glass. Lamps on control panel to indicate heating activation and the proper equipment operation. Special design knobs to avoid water penetration in the control panel. IPX5 protection rating. Base completely made in stainless steel. Pressed hinged door. Ergonomic handle. Adjustable feet made in stainless steel. Electric power supply VAC 400 3N 50÷60 Hz - 6,8 kW.

## Technical draw



E: Electric power