

Client \_\_\_\_\_ Quantity \_\_\_\_\_  
Project \_\_\_\_\_ Position \_\_\_\_\_

## FUN 650

Model: F65/40PVE/T

Cod: MP01092122000



### Technical data

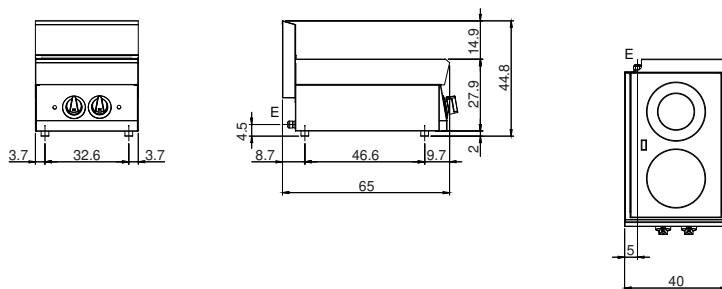
Modularity:	Top
Dimension (mm):	400x650x300
Total electric power (kW):	4,6
Electric power (V):	380-415
Ampere (A):	11,5
Phases:	3N
Cable section (mmq):	5G2,5
Frequency (Hz):	50-60
Net volume (m3):	0,078
Packing dimensions (mm):	477x776x612
Gross weight (kg):	20
Gross volume (m3):	0,227

### Features

Working top:	Made of AISI 304 stainless steel with a thickness of 10/10 mm
Knobs:	Knobs are made from a sturdy heat-resistant polymer blend and are equipped with liquid anti-leakage washer

Electric hob in pyroceram with 2 plates Top in AISI 304 stainless steel thickness 8/10; covering in AISI 430 stainless steel 8/10; bottoms and internal parts in AISI 430 steel; internal reinforcements made of anti-corrosion material. (aluminised sheet metal). Hermetic hob easily accessible for cleaning. The cooking zones are highly flexible. They reach operating temperature quickly and are equipped with a device against overheating. Six different temperature adjustments for each plate. Indicator lights to show electrical power supplied and cooking zones in operation. Power: 1 zone x 2.1 kW and 1 zone x 2.4 kW. - Total power 4.5 kW Electrical power supply V AC 400+3N 50÷60 Hz.

## Technical draw



E: Electric power