



Client _____ Quantity _____

Project _____ Position _____

ROC 900

Model: R90/80TPPGFB/P

Cod: MP01054114053

Technical data

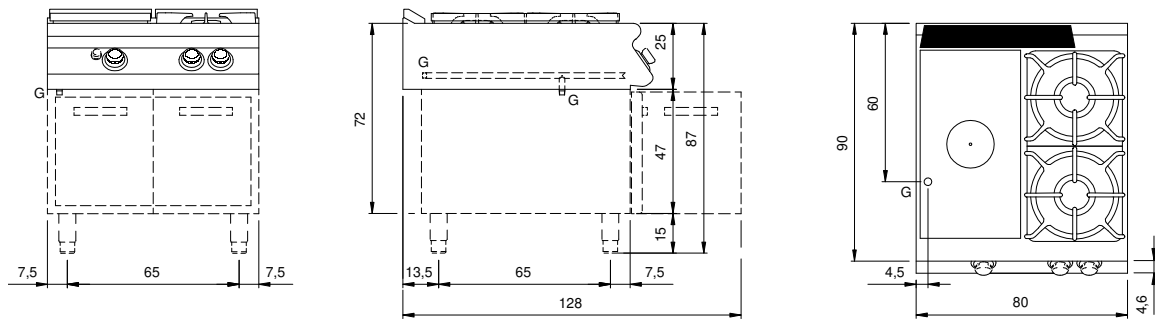
Modularity:	On cabinet with doors
Dimension (mm):	800x900x870
Total gas power (Kcal/h):	17198
Total gas power (kW):	20
Whole-plate power gas (kW):	7
Gas connection:	1/2"
Packing dimensions (mm):	880x1026x1109
Gross weight (kg):	115
Burner power 3 (kW):	5,5
Burner power 4 (kW):	7,5
Gross volume (m3):	1,001

Features

Working top:	Made of AISI 304 stainless steel with a thickness of 20/10 mm
Knobs:	Made of aluminum with IPX5 water protection
Handles:	The brushed aluminum handles allow for a secure and sturdy grip with a ergonomic lines
Flue:	Removable made of cast iron
Kit Gas:	Natural gas conversion kit 30/50 m/bar (tested with natural gas G20)

Gas solid top range, 2 burners enamelled containers, on cabinet with doors. Side panels, bottom and back made in stainless steel. Top made in AISI 304 thickness 20/10 designed for flush alignment. Rear flue made in enamelled cast-iron. Cooking plate made in extra-thick cast iron with extractable central plate. The central zone can reach 500°C while decreasing awards (to 300 °C). Heating by cast iron burner with 7 kW power. Gas supply by means of safety tap with pilot flame and safety thermocouple. Ignition by means of piezoelectric device with waterproof cap. Plate dimensions 380x710. Equipped with high-power cast iron/brass rapid burners with containers in enamelled steel that can be extracted for easy cleaning. nr.1 burner 7.5 kW and nr.1 burner 5.5 kW. Special design knobs to avoid water penetration in the control panel. Adjustable feet. IPX5 protection rating. Gas total power 20 kW.

Technical draw



G: Gas connection 1/2"