



Client \_\_\_\_\_ Quantity \_\_\_\_\_  
Project \_\_\_\_\_ Position \_\_\_\_\_

## ROC 900

Model: R90/120TPPGF/P

Cod: MP01054114012

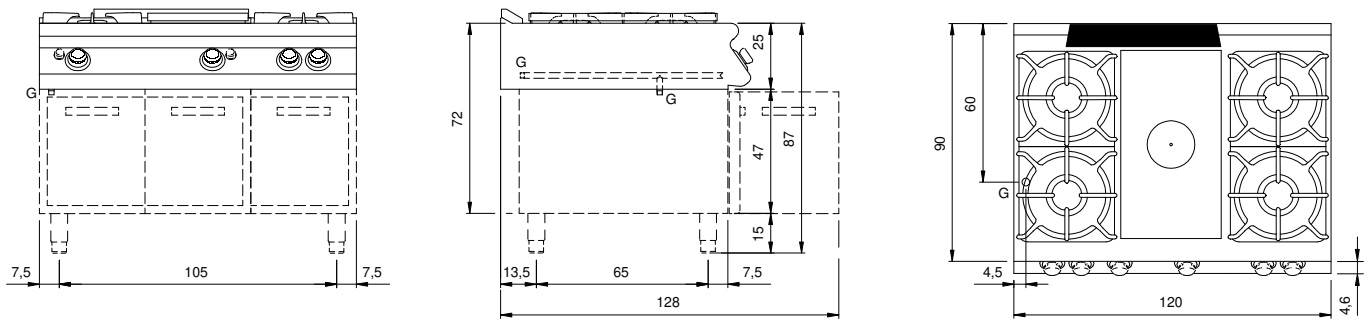
### Technical data

|                             |                       |
|-----------------------------|-----------------------|
| Modularity:                 | On cabinet with doors |
| Dimension (mm):             | 1200x900x870          |
| Total gas power (Kcal/h):   | 36974                 |
| Total gas power (kW):       | 43                    |
| Whole-plate power gas (kW): | 7                     |
| Gas connection:             | 1/2"                  |
| Net volume (m3):            | 0,94                  |
| Packing dimensions (mm):    | 1280x1026x1109        |
| Gross weight (kg):          | 162                   |
| Burner power 1 (kW):        | 6                     |
| Burner power 2 (kW):        | 10                    |
| Burner power 3 (kW):        | 10                    |
| Burner power 4 (kW):        | 10                    |
| Gross volume (m3):          | 1,456                 |

### Features

|              |                                                                                        |
|--------------|----------------------------------------------------------------------------------------|
| Working top: | Made of AISI 304 stainless steel with a thickness of 20/10 mm                          |
| Knobs:       | Made of aluminum with IPX5 water protection                                            |
| Handles:     | The brushed aluminum handles allow for a secure and sturdy grip with a ergonomic lines |
| Flue:        | Removable made of cast iron                                                            |
| Kit Gas:     | Natural gas conversion kit 30/50 m/bar (tested with natural gas G20)                   |

## Technical draw



G: Gas connection 1/2"