



Client _____ Quantity _____
Project _____ Position _____

ROC 900

Model: R90/80TPPGF/P

Cod: MP01054114008

Technical data

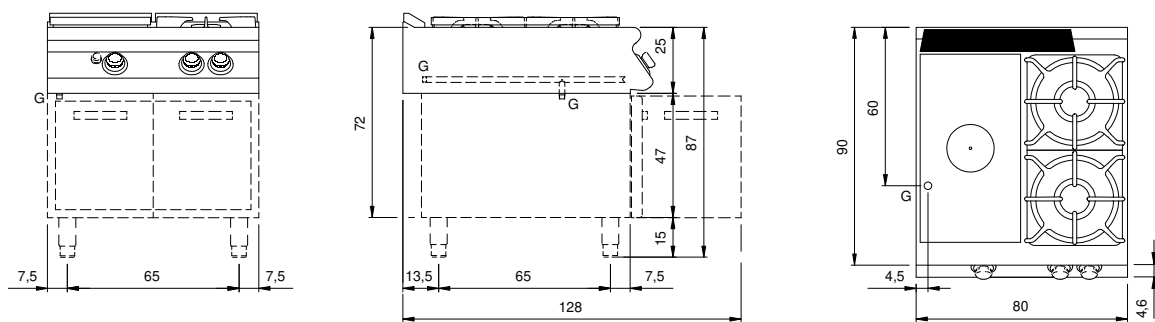
Modularity:	On cabinet with doors
Dimension (mm):	800x900x870
Total gas power (Kcal/h):	19777
Total gas power (kW):	23
Whole-plate power gas (kW):	7
Gas connection:	1/2"
Net volume (m3):	0,626
Packing dimensions (mm):	880x1026x1109
Gross weight (kg):	117
Burner power 3 (kW):	6
Burner power 4 (kW):	10
Gross volume (m3):	1,001

Features

Working top:	Made of AISI 304 stainless steel with a thickness of 20/10 mm
Knobs:	Made of aluminum with IPX5 water protection
Handles:	The brushed aluminum handles allow for a secure and sturdy grip with a ergonomic lines
Flue:	Removable made of cast iron
Kit Gas:	Natural gas conversion kit 30/50 m/bar (tested with natural gas G20)

Gas solid top range with 2 burners, model on cabinet with doors. Side panels, bottom and back made in stainless steel. Top made in AISI 304 thickness 20/10 designed for flush alignment. Rear flue made in enamelled cast-iron. Cooking plate made in extra-thick cast iron with extractable central plate. The central zone can reach 500°C while decreasing awards (to 300 °C). Heating by cast iron burner with 7 kW power. Gas supply by means of safety tap with pilot flame and safety thermocouple. Ignition by means of piezoelectric device with waterproof cap. Plate dimensions 380x710. Rapid burners made in cast iron and brass sealed to the top. Gas supply by safety taps with thermocouple and pilot burner for the automatic ignition of main burner. Radiused corners top, easy to clean, equipped with high thick enamelled cast-iron hobs resistant to acid, alkali and flame. Nr.1 burner 10 kW and nr.1 burner 6 kW. (Available burner powers 3,5 kW, 6 kW, 7,5 kW, 10 kW). Special design knobs to avoid water penetration in the control panel. Base completely made in stainless steel. Pressed hinged door. Ergonomic handle. Adjustable feet made in stainless steel. IPX5 protection rating. Gas total power 23 kW.

Technical draw



G: Gas connection 1/2"