

Client _____ Quantity _____
Project _____ Position _____

ROC 700

Model: R70/80TPPGFB/T

Cod: MP01054113051



Technical data

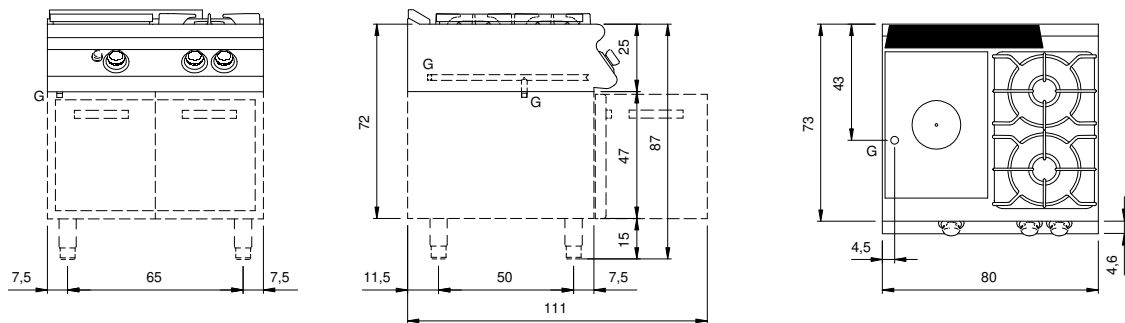
Modularity:	Top
Dimension (mm):	800x730x280
Total gas power (Kcal/h):	13071
Total gas power (kW):	15,2
Whole-plate power gas (kW):	6
Gas connection:	1/2"
Net volume (m3):	0,164
Packing dimensions (mm):	880x856x509
Gross weight (kg):	105
Burner power 3 (kW):	5,5
Burner power 4 (kW):	3,7
Gross volume (m3):	0,383

Features

Working top:	Made of AISI 304 stainless steel with a thickness of 20/10 mm
Knobs:	Made of aluminum with IPX5 water protection
Flue:	Removable gas exhaust flue grill made of cast iron
Kit Gas:	Natural gas conversion kit 30/50 m/bar (tested with natural gas G20)

Gas solid top range, 2 burners enamelled containers, model top. Side panels, bottom and back made in stainless steel. Top made in AISI 304 thickness 20/10 designed for flush alignment. Rear flue made in enamelled cast-iron. Cooking plate made in extra-thick cast iron with extractable central plate. The central zone can reach 500°C while decreasing awards (to 300 °C). Heating by cast iron burner with 6 kW power. Gas supply by means of safety tap with pilot flame and safety thermocouple. Ignition by means of piezoelectric device with waterproof cap. Plate dimensions 380x710. Equipped with high-power cast iron/brass rapid burners with containers in enamelled steel that can be extracted for easy cleaning. nr.1 burner 3.7 kW and nr.1 burner 5.5 kW. Special design knobs to avoid water penetration in the control panel. Adjustable feet. IPX5 protection rating. Gas total power 15.2 kW.

Technical draw



G: Gas connection 1/2"