



Client \_\_\_\_\_ Quantity \_\_\_\_\_  
Project \_\_\_\_\_ Position \_\_\_\_\_

## ROC 700

Model: R70/80TPPGF/A

Cod: MP01054113007

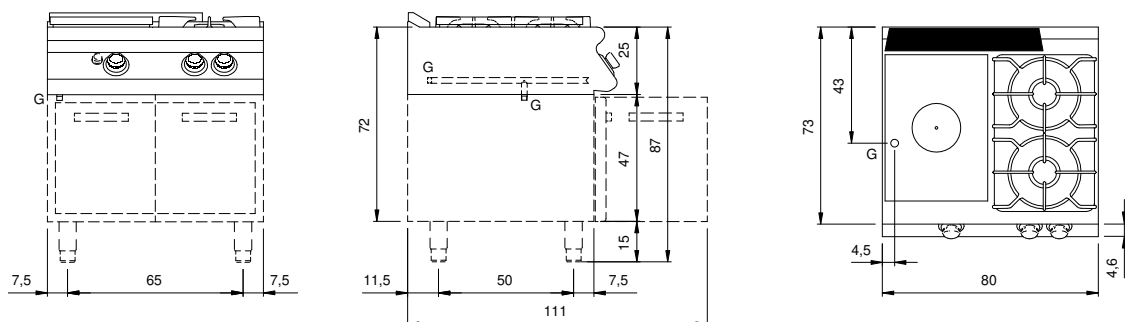
### Technical data

Modularity:	On open cabinet
Dimension (mm):	800x730x870
Total gas power (Kcal/h):	15478
Total gas power (kW):	18
Whole-plate power gas (kW):	6
Gas connection:	1/2"
Net volume (m3):	0,508
Packing dimensions (mm):	880x856x1109
Gross weight (kg):	123
Burner power 3 (kW):	6
Burner power 4 (kW):	6
Gross volume (m3):	0,835

### Features

Working top:	Made of AISI 304 stainless steel with a thickness of 20/10 mm
Knobs:	Made of aluminum with IPX5 water protection
Flue:	Removable gas exhaust flue grill made of cast iron
Kit Gas:	Natural gas conversion kit 30/50 m/bar (tested with natural gas G20)

## Technical draw



G: Gas connection 1/2"