



Client \_\_\_\_\_ Quantity \_\_\_\_\_  
Project \_\_\_\_\_ Position \_\_\_\_\_

## FUN 700

Model: F70/110TPPGFB/A

Cod: MP01052113008

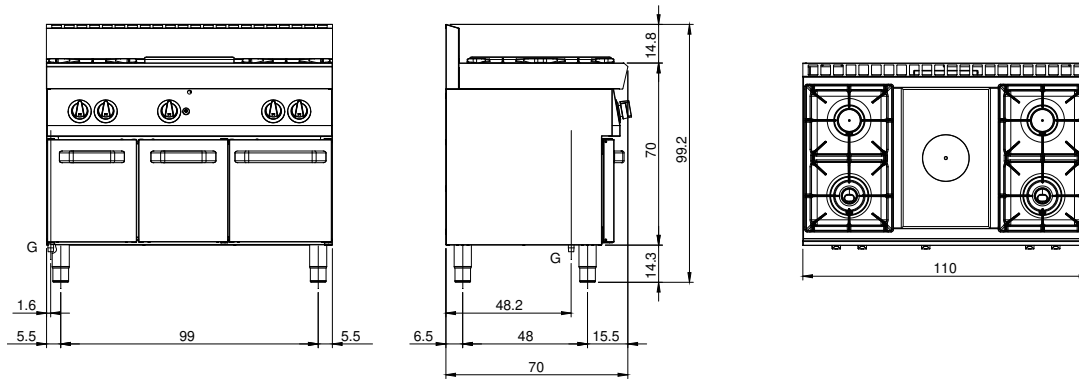
### Technical data

|                             |                 |
|-----------------------------|-----------------|
| Modularity:                 | On open cabinet |
| Dimension (mm):             | 1100x700x850    |
| Total gas power (Kcal/h):   | 20980           |
| Total gas power (kW):       | 24,4            |
| Whole-plate power gas (kW): | 5,5             |
| Gas connection:             | 1/2"            |
| Net volume (m3):            | 0,655           |
| Packing dimensions (mm):    | 1176x776x1180   |
| Gross weight (kg):          | 86              |
| Burner power 1 (kW):        | 5,5             |
| Burner power 2 (kW):        | 3,7             |
| Burner power 3 (kW):        | 5,5             |
| Burner power 4 (kW):        | 3,7             |
| Gross volume (m3):          | 1,077           |

### Features

|              |  |
|--------------|--|
| Grill:       | Cast-iron with brass single- and double-crown burner with pilot  |
| Working top: | Made of AISI 304 stainless steel with a thickness of 10/10 mm  |
| Knobs:       | Knobs are made from a sturdy heat-resistant polymer blend and are equipped with liquid anti-leakage washer |
| Kit Gas:     | Natural gas conversion kit 30/50 m/bar (tested with natural gas G20)                                       |

## Technical draw



G: Gas connection 1/2"