



Client _____ Quantity _____
Project _____ Position _____

FUN 700

Model: F70/110TPPGFB/T

Cod: MP01052113007

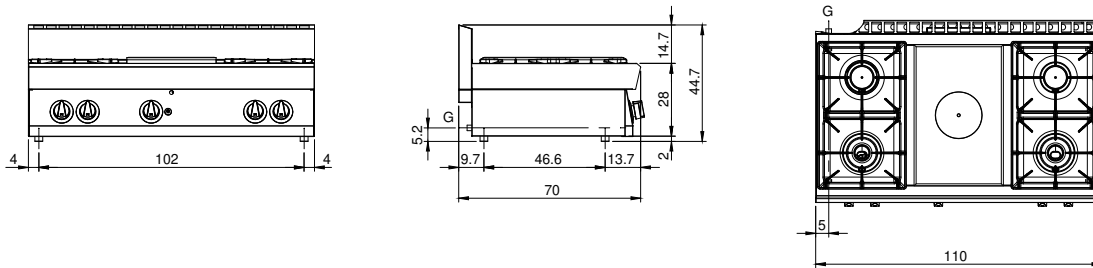
Technical data

Modularity:	Top
Dimension (mm):	1100x700x300
Total gas power (Kcal/h):	20980
Total gas power (kW):	24,4
Whole-plate power gas (kW):	5,5
Gas connection:	1/2"
Net volume (m3):	0,22
Packing dimensions (mm):	1176x776x636
Gross weight (kg):	70
Burner power 1 (kW):	5,5
Burner power 2 (kW):	3,7
Burner power 3 (kW):	5,5
Burner power 4 (kW):	3,7
Gross volume (m3):	0,580

Features

Grill:	Cast-iron with brass single- and double-crown burner with pilot
Working top:	Made of AISI 304 stainless steel with a thickness of 10/10 mm
Knobs:	Knobs are made from a sturdy heat-resistant polymer blend and are equipped with liquid anti-leakage washer
Kit Gas:	Natural gas conversion kit 30/50 m/bar (tested with natural gas G20)

Technical draw



G: Gas connection 1/2"