

Client \_\_\_\_\_ Quantity \_\_\_\_\_  
 Project \_\_\_\_\_ Position \_\_\_\_\_

## FUN 700

Model: F70/70TPG/T

Cod: MP01052113000



### Technical data

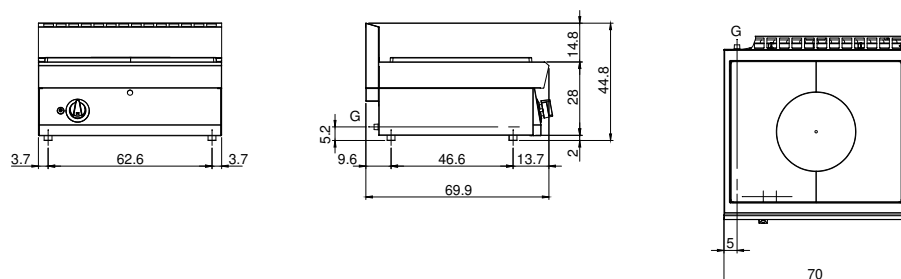
Modularity:	Top
Dimensions (mm):	700x700x300
Total gas power (Kcal/h):	7739
Total gas power (kW):	9
Whole-plate power gas (kW):	8,2
Gas connection:	1/2"
Net volume (m3):	0,147
Packing dimensions (mm):	776x776x636
Gross weight (kg):	68
Gross volume (m3):	0,383

### Features

Grill:	Cast-iron with brass single- and double-crown burner with pilot
Working top:	Made of AISI 304 stainless steel with a thickness of 10/10 mm
Knobs:	Knobs are made from a sturdy heat-resistant polymer blend and are equipped with liquid anti-leakage washer
Kit Gas:	Natural gas conversion kit 30/50 m/bar (tested with natural gas G20)

Gas solid top range on gas oven. Top made of AISI 304 stainless steel thickness 10/10; covering in AISI 304 stainless steel thickness 10/10; bottoms and internal parts in AISI 430 steel; internal reinforcements made of anti-corrosion material (aluminised sheet metal). Steel full plate featuring high-performance and equipped with central pull-out ring. Heating takes place by means of the high-power cast iron central burner, with piezoelectric ignition pilot burner. Gas is supplied by means of a safety valve with thermocouple. Static gas oven in enamelled steel with double wall isolated door on hinges with balancing springs. The thermally insulated chamber is equipped with 3-position side rack supports which can be extracted for cleaning. Heating takes place by means of stabilized flame burner with piezoelectric ignition; gas is supplied by means of a thermostatic safety valve with thermocouple. Temperature adjustment from 50° to 300°C. Internal dimensions 530x540x280h. mm. 1 rack 530x530 mm included. Full plate 1 burner 8.2 kW. Total power 5 kW. Total gas power 13.2 kW

### Technical draw



G: Gas connection 1/2"