



Client _____ Quantity _____
Project _____ Position _____

ROC 900

Model: R90/80CFGEV

Cod: MP01034134001

Technical data

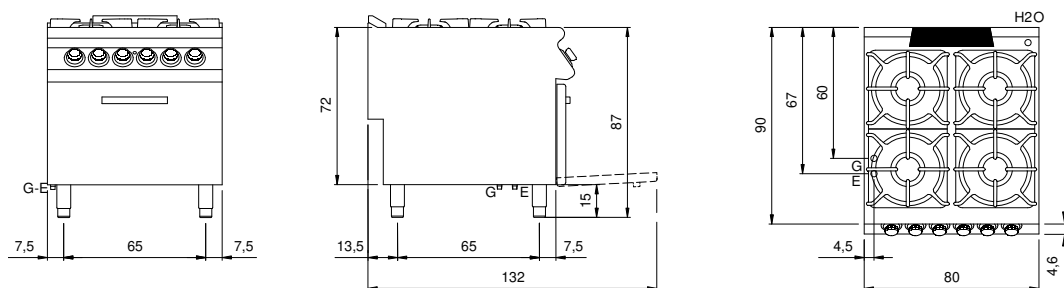
Modularity:	Electric oven
Dimension (mm):	800x900x870
Oven dimension (mm):	555x655x255
Total electric power (kW):	6
Total gas power (Kcal/h):	30955
Total gas power (kW):	36
Oven type:	Electric convection oven
Oven power (kW):	6
Oven temperature range (°C):	50-300
Gas connection:	1/2"
Electric power (V):	380-415
Ampere (A):	14
Phases:	3N
Cable section (mmq):	5G1,5
Frequency (Hz):	50-60
Net volume (m3):	0,626
Packing dimensions (mm):	880x1026x1109
Gross weight (kg):	154,1
Burner power 1 (kW):	6
Burner power 2 (kW):	10
Burner power 3 (kW):	10
Burner power 4 (kW):	10
Gross volume (m3):	1,001

Features

Burners:	Single and double crown cast iron burners with brass burner cap
Grill:	For single burner in cast iron or stainless steel (optional) dishwasher safe
Working top:	Pressed top made of AISI 304 stainless steel 20/10 mm thick
Knobs:	Made of aluminum with IPX5 water protection
Handles:	The brushed aluminum handles allow for a secure and sturdy grip with a ergonomic lines
Flue:	Removable made of cast iron
Kit Gas:	Natural gas conversion kit 30/50 m/bar (tested with natural gas G20)

Gas range with 4 burners on electric convection oven. Side panels, bottom and back made in stainless steel. Pressed top made in AISI 304 thickness 20/10 designed for flush alignment. Rear flue made in enamelled cast-iron. Gas supply by safety taps with thermocouple and pilot burner for the automatic ignition of main burner. Radiused corners top, easy to clean, equipped with high thick enamelled cast-iron hobs resistant to acid, alkali and flame. Rapid burners made in cast iron and brass sealed to the top, nr.3 burners 10 kW and nr.1 burner 6 kW. (Available burner powers 3,5 kW, 6 kW, 7,5 kW, 10 kW). Electric convection oven GN 2/1. Heating by electric upper and lower heating elements with independent regulation. Temperature regulation by thermostat, from 50 °C to 300 °C. Safety thermostat. Lamp on control panel to indicate oven heating activation. Cooking chamber made in stainless steel. Oven inner door made in stainless steel with labyrinth seal. Oven power 6 kW. Special design knobs to avoid water penetration in the control panel. Adjustable feet made in stainless steel. Pressed door with ergonomic handle. IPX5 protection rating. Gas total power 36 kW. Electric power supply VAC 400 3N 50÷60 Hz - 6 kW.

Technical draw



G: Gas connection 1/2"

E: Electric power